



LIGHT UP
YOUR WORLD



 **SYSKA LED**[®]
LIGHT YEARS AHEAD





SYSKA LED Lights offer smart innovations for the future of lighting. Advanced technology, energy efficiency and durability put SYSKA LED light years ahead, giving it a clear edge in today's market. Every LED light made by SYSKA LED is crafted to meet global standards. SYSKA LED Lights not only have the right technology, but also perform with ease. They are developed specially to optimise their output, outshining many other lights in the market.

SYSKA LED Lights are of superior quality and are available at an affordable price. SYSKA LED Lights offer a wide range of international quality LED lighting solutions, for varied applications providing effective and energy-efficient lighting in any environment. Their usage ranges from residential and retail, to commercial and industrial applications. SYSKA LED Lights are fully integrated into the systematic structure of the overall product range. This allows lighting designers the freedom to use LED lighting tools, and seamlessly combine them with conventional products. Almost all products are UL certified bearing LM 79 test report. As the future unfolds, SYSKA LED will play a pivotal role in shifting lighting usage from energy consuming conventional CFL lighting to LEDs.



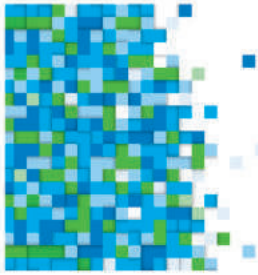


LED BULBS

From traditional CFL bulbs it's best to switch to Syska LED bulbs. The complete range of LED bulbs emit a brighter glow, consume less power and are environment-friendly.







LED EMERGENCY BULB

The Syska Emergency LED Bulb is always by your side in case of power outages. Its compact rechargeable battery stores power which is used during power outages.

Details	SSK-EMB-0701	SSK-EMB-0901
Input Power	7W	9W
Holder Base	B22/E27	
Size (mm)	ø60x124(H)	ø70x143(H)
Input Voltage Range	AC 90-300V, 50/60Hz	
Colour Temperature	3000K~6500K	
Type	Non-Dimmable	
CRI	>80	
Beam Angle	180°	
Lumens	700lm	810lm
Ingress Protection	IP20	
Operating Temperature Range	0° C to 40° C	
Charging Time	8-10 hours	
Emergency Time	3.5 hours (max)	
Emergency Power	4.5 W	
Housing	Aluminum + Thermoplastic	
Emergency Lumens	350lm	450lm
Battery Capacity	2000mAh	2200mAh
Battery Type	Lithium ion	



Emergency use



B22/E27 Base



Eco-friendly



Lower power consumption and energy saving

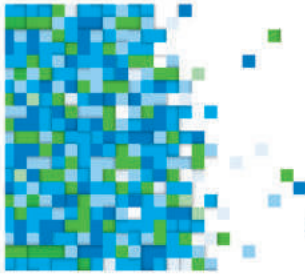


No UV radiation



Rechargeable bulb





LED DETACHABLE EMERGENCY BULB

Say goodbye to power outages with the Syska Re-energize emergency bulb. The bulb automatically lights up when there is a power cut. It functions with the help of a rechargeable and replaceable battery.

Details	SSK-EMB-0902-D
Input Power	9W
Size (mm)	Ø79x168(H)
Input Voltage Range	AC 240V, 50Hz
Colour Temperature	3000K-6500K
Battery Capacity	2200mAh
Battery Type	Lithium ion
CRI	>75
Beam Angle	>120°
Lumens	>900lm
Charging Time	8-10 Hrs
Backup Time	Up to 3 Hrs
Lumens @ Emergency	>400lm
Ingress Protection	IP20
Operating Temperature Range	0°C to 40°C
Housing	Aluminum + Thermoplastic



Elliptical lens gives wide spread of light to cover maximum area



Lower power consumption and energy saving



Long life span (Up to 50,000 hrs)



No UV radiation



Good colour rendering



Eco-friendly



Rechargeable battery

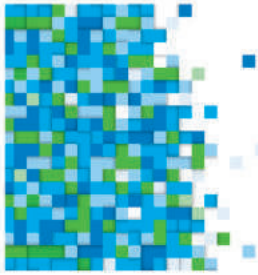


Emergency use



Replaceable battery





LED BACTIGLOW BULB

The Syska Bactiglow is a 2-IN-1 LED bulb that also works as an anti-bacterial bulb. It emits Ultraviolet Germicidal Irradiation (UVGI) that uses short wavelengths to effectively kill germs and resist its growth around you.

Details	SSK-BAB-9W-2N1
Input Power	9W
Holder Base	B22/E27
Size (mm)	Ø60x96(H)
Input Voltage Range	AC 90-300V, 50Hz
Colour Temperature	3000K-6500K
CRI	>75
Beam Angle	>180°
Lumens	>810lm
Ingress Protection	IP20
Operating Temperature Range	-10°C to 50°C
Housing	Thermoplastic/Aluminum



Good colour rendering



Long life span
(Up to 50,000 hrs)



No UV radiation



Eco-friendly



Lower power consumption
and energy saving

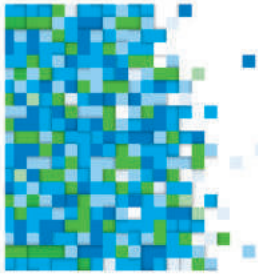


Elliptical lens gives
wide spread of light
to cover maximum area



2-IN-1 application
Normal light + Anti-bacterial /
Anti-bacterial





LED MOSGUARD BULB

Time to keep mosquitoes at bay with this anti-mosquito LED bulb. The blue LED light, draws the mosquitoes towards its high-voltage metal grid which zaps them instantly.

Details	SSK-MOS-1501-15W
Input Power	15W
Holder Base	B22/E27
Size (mm)	Ø85x147(H)
Input Voltage Range	AC 90-300V, 50Hz
Colour Temperature	6500K
CRI	>80
Beam Angle	>120°
Lumens	>1350lm
Ingress Protection	IP20
Operating Temperature Range	-10°C to 50°C
Housing	Thermoplastic/Aluminum



Eco-friendly



Good colour rendering



Long life span
(Up to 50,000 hrs)



No UV radiation



Lower power consumption
and energy saving



Elliptical lens gives
wide spread of light
to cover maximum area



2 Stage operation

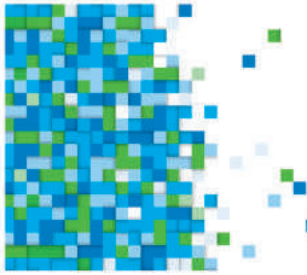


3-IN-1 application



Operating hours
10-12 Hrs/Day





LED 4-IN-1 BULB (QUARTET)

The Syska Quartet is a bulb that gives you the option to choose from 4 shades of light i.e. Blue, Red, Magenta and warm Night light. The bulb has a high beam angle, is environment-friendly and extremely energy-efficient.

Details	SSK-4N1-1201-12W	SSK-4N1-1202-12W	SSK-4N1-1203-12W
Input Power	12W	12W	12W
Holder Base	B22/E27		
Size (mm)	Ø65x125(H)		
Input Voltage Range	AC 90-300V, 50Hz		
Colour Temperature	CW-WW-NW-NIGHTMODE	BLUE-RED-MEGENTA-NIGHTMODE	CW-BLUE-SKY BLUE-NIGHTMODE
CRI at 6500K	>80		
Beam Angle	>120°		
Lumens (at 6500K)	1200lm	NA	1200lm
Ingress Protection	IP20		
Operating Temperature Range	-10°C to 50°C		
Housing	Aluminum + Thermoplastic		



Eco-friendly



Good colour rendering



Long life span
(Up to 50,000 hrs)



No UV radiation



4-IN-1 application



Lower power consumption and energy saving

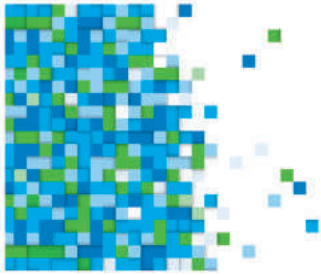


Elliptical lens gives wide spread of light to cover maximum area



Night lamp mode





LED FAN BULB

The Syska Fan Bulb is an innovative bulb shaped like a fan. Its foldable design lets you adjust the spread of the light, so you can get a wider spread as well as a concentrated ray of light according to your lighting needs. They are environment-friendly and consume less power.

Details	SSK-FAB-4001
Input Power	40W
Holder Base	B22/E27
Size (mm)	Ø73x235(H)
Input Voltage Range	AC 90-300V, 50Hz
Colour Temperature	3000K-6500K
CRI	>75
Beam Angle	>120°
Lumens	>4000lm
Ingress Protection	IP20
Operating Temperature Range	-20°C to 50°C
Housing	Thermoplastic



Foldable design



Fan shaped bulb



No UV radiation



Wide operating voltage



B22/E27 Base



Patented model



Flap's movement up to 90° per flap



Light output >180°

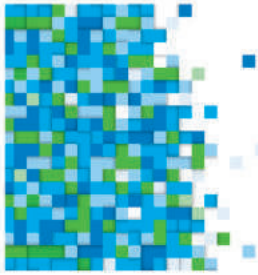


Eco-friendly



Lower power consumption and energy saving





LED TRITONE BULB

Make your space brighter with the Syska Tritone. With its 3 stage dimming function you can set the brightness of the bulb as per your mood and need.

Details	SSK-PAG-9W-DX3
Input Power	9W
Holder Base	B22/E27
Size (mm)	ø70X124(H)
Input Voltage Range	AC 90-300V, 50Hz
Colour Temperature	3000K~6500K
CRI	>80
Beam Angle	>240°
Lumens	150~500~900lm
Switch Mode	3 Way Switching
Ingress Protection	IP20
Operating Temperature Range	-20°C to 50°C
Housing	Thermoplastic/Aluminum



Lower power consumption and energy saving



Replacement for high wattage CFL & HD lamps



Long life span (Up to 50,000 hrs.)



Eco-friendly

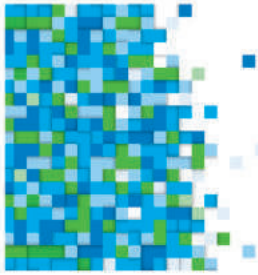


3 Way switching



3 Stage dimming





LED DUALITE BULB

The Syska Dualite is a two tone bulb which lets you light up your room with yellow or white light by using a single switch. It is environment-friendly and energy-efficient.

Details	SSK-PAG-5W-2 IN 1	SSK-PAG-7W-2 IN 1	SSK-PAG-9W-2 IN 1	SSK-PAG-12W-2 IN 1
Input Power	5W	7W	9W	12W
Holder Base	B22/E27			
Size (mm)	ø60x110(H)	ø70x118(H)	ø70x124(H)	ø80x140(H)
Input Voltage Range	AC 90-300V, 50Hz			
Colour Temperature	3000K~6500K			
CRI	>80			
Beam Angle	>240°			
Lumens (at 6500K)	425~500lm	595~700lm	765~900lm	1020~1200lm
Switch Mode	Mode 1: 6500K / Mode 2: 3000K			
Ingress Protection	IP20			
Operating Temperature Range	-20°C to 50°C			
Housing	Aluminum + Thermoplastic			



Lower power consumption and energy saving



Replacement for high wattage CFL & HD lamps



Long life span (Up to 50,000 hrs.)

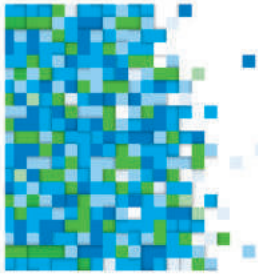


Eco-friendly



2-IN-1 application





LED T-LAMP BULB (LUMISPREAD)

The Lumispread is a revolutionary LED bulb that fits into a regular bulb socket and has the power to emit a widespread beam of light like that of a tube light. The swivel head lets you adjust the light in the direction you want.

Details	SSK-TLL-10W	SSK-TLL-12W
Input Power	10W	12W
Holder Base	B22/E27	
Size (mm)	200x30x80(H)	
Input Voltage Range	AC 220-240V	
Colour Temperature	6500K	
CRI	>75	
Beam Angle	>180°	
Lumens	>1000lm	>1200lm
Ingress Protection	IP20	
Operating Temperature Range	-10°C to 50°C	
Housing	Thermoplastic	



Lower power consumption and energy saving



No UV radiation



B22/E27 Base



Swivel body action



Eco-friendly



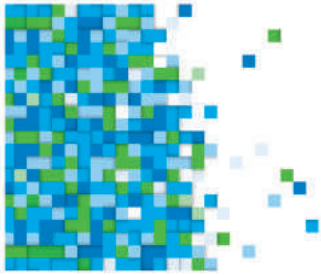
Unidirectional



SSK-TLL-10W



SSK-TLL-12W



LED 0.5W BULB

Replace your 'zero-watt' bulbs with this hero. You can also leave the bulb on for the entire night as it consumes a fraction of one watt and provides significant power saving.

Details	SSK-PAG-N-0.5W - W	SSK-PAG-N-0.5W - Y	SSK-PAG-N-0.5W - R	SSK-PAG-N-0.5W - B	SSK-PAG-N-0.5W - G	SSK-PAG-N-0.5W - O	SSK-PAG-N-0.5W - P
Colour	White	Yellow	Red	Blue	Green	Orange	Pink
Input Power	0.5 W						
Holder Base	B22						
Size (mm)	ø30x78(H)						
Input Voltage Range	AC 90-300V, 50/60Hz						
Beam Angle	270°						
Lumens	30lm						
Operating Temperature Range	-20°C to +60°C						
Ingress Protection	IP44						



Lower power consumption and energy saving



No UV radiation



Wide operating voltage

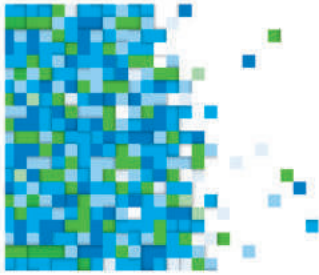


Eco-friendly



Retrofit





LED LUMI STAR

When it comes to saving energy the Syska Lumi Star shines the brightest. A perfect replacement for CFL bulbs, these lights are energy efficient (5 star rating) and are ideal to light up home and office spaces.

Details	SSK-LMS-7W	SSK-LMS-9W	SSK-LMS-12W
Input Power	7W	9W	12W
Holder Base	B22 / E27		
Size (mm)	ø60x112(H)		ø60x117(H)
Input Voltage Range	AC 90-300V, 50/60Hz		
Colour Temperature	3000K~6500K		
CRI	>80		
Beam Angle	>300°		>270°
Lumens	>840lm	>1080lm	>1440lm
Ingress Protection	IP44		
Operating Temperature Range	-20°C to 50°C		
Housing	Aluminum + Thermoplastic		



120 Lumens/W



Replacement for CFL lamp



Wide operating voltage



Eco-friendly



No UV radiation

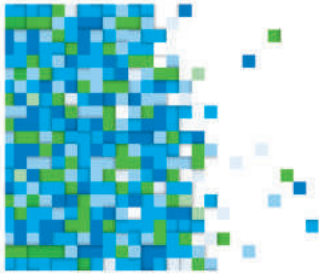


Lower power consumption and energy saving



B22/E27 Base





LED BULB

Time to switch from CFL to LED Bulbs. LED bulbs consume less power and emit no UV rays. With Plastic-aluminum Thermal Management Technology they do not heat up and last longer.

Details	SSK-PAG-0.5W	SSK-PAG-3W	SSK-PAG-5W	SSK-PAG-7W	SSK-PAG-9W	SSK-PAG-12W	SSK-PAG-15W	SSK-PAG-18W
Input Power	0.5 W	3 W	5W	7W	9W	12W	15W	18W
Holder Base	B22 / E27							
Size (mm)	ø30x78(H)	ø50x89(H)	ø60x110(H)	ø70x118(H)	ø70x124(H)	ø80x140(H)	ø80x140(H)	ø95x155(H)
Input Voltage Range	AC 90-300V, 50/60Hz							
Colour Temperature	3000K~6500K							
CRI	>75							
Beam Angle	>220°							
Lumens	>30lm	>300lm	>500lm	>665lm	>900lm	>1200lm	>1500lm	>1800lm
Ingress Protection	IP44							
Operating Temperature Range	-20°C to 60°C							
Housing	Aluminum + Thermoplastic							



Lower power consumption and energy saving



Replacement for CFL lamp



Eco-friendly



No UV radiation

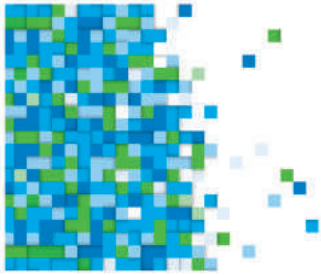


Wide operating voltage



B22/E27 base





LED BULB

Time to switch from CFL to LED Bulbs. LED bulbs consume less power and emit no UV rays. With Plastic-aluminum Thermal Management Technology they do not heat up and thus last longer.

Details	SSK-PAG-N-3W	SSK-PAG-N-5W	SSK-PAG-N-7W	SSK-PAG-N-9W	SSK-PAG-N-12W	SSK-PAG-N-15W	SSK-PAG-N-18W
Input Power	3W	5W	7W	9W	12W	15W	18W
Holder Base	B22/E27						
Size (mm)	ø50x85(H)	ø60x108(H)	ø60x111(H)	ø65x118(H)	ø70x125(H)	ø70x140(H)	ø80x153(H)
Input Voltage Range	AC 90-300V, 50/60Hz						
Colour Temperature	3000K~6500K						
CRI	>75						
Beam Angle	> 220°						
Lumens	>300lm	>475lm	>630lm	>810lm	>1140lm	>1425lm	>1710lm
Ingress Protection	IP44						
Operating Temperature Range	-20°C to +60°C						
Housing	Aluminum + Thermoplastic						



Lower power consumption and energy saving



Replacement for CFL lamp



Eco-friendly



No UV radiation

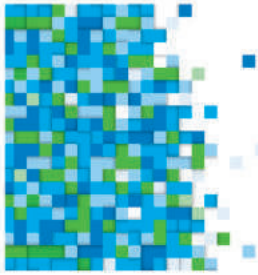


Wide operating voltage



B22/E27 Base





LED SRL-MAXGLOW BULB

Max up the illumination of a room with the Syska Maxglow LED bulb. It ensures maximum savings and is an eco-friendly alternative when compared to CFL bulbs.

Details	SSK-SRL-3W-MG	SSK-SRL-5W-MG	SSK-SRL-7W-MG	SSK-SRL-9W-MG	SSK-SRL-12W-MG	SSK-SRL-15W-MG	SSK-SRL-18W-MG	SSK-SRL-20W-MG
Input Power	3W	5W	7W	9W	12W	15W	18W	20W
Holder Base	B22/E27							
Size (mm)	Ø52x101(H)		Ø56x101(H)		Ø68x123(H)		Ø75x140(H)	
Input Voltage Range	AC 90-300V, 50Hz							
Colour Temperature	3000K-6500K							
CRI	>80							
Beam Angle	>140°							
Lumens	>300lm	>500lm	>700lm	>900lm	>1200lm	>1500lm	>1800lm	>2000lm
Ingress Protection	IP20							
Operating Temperature Range	-10°C to 50°C							
Housing	Aluminum + Thermoplastic							



Lower power consumption and energy saving



No UV radiation



Replacement for CFL lamp



Wide operating voltage

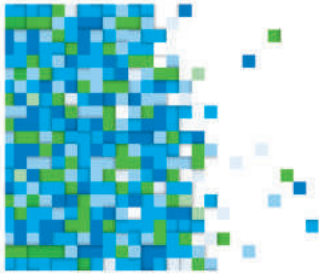


Eco-friendly



B22/E27 Base





LED ROCKET BULB

The Syska Rocket bulb has a unique design and comes with a wide operating voltage. It's time to make a switch from a high power conventional lamp to the Syska Rocket Bulb.

Details	SSK-RB-2601	SSK-RB-3501	SSK-RB-4501
Input Power	26W	35W	45W
Holder Base	B22/E27	B22/E27/E40	
Size (mm)	ø80x180(H) / ø80x196(H)	ø90x209(H)	ø90x230(H)
Input Voltage Range	AC 90~300V, 50/60Hz		
Colour Temperature	3000K~6500K		
CRI	>75		
Beam Angle	>180°		
Lumens	>3120lm	>4200lm	>5400lm
Ingress Protection	IP44		
Operating Temperature Range	-20°C to +60°C		
Housing	Aluminum + Thermoplastic + Polycarbonate		



B22/E27 & E40 Base



Lower power consumption and energy saving



No UV radiation



Eco-friendly



120 Lumens/W



Wide operating voltage

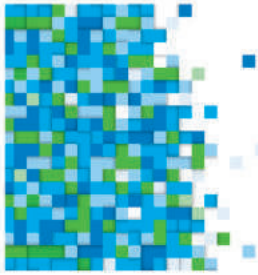


Long life span (Up to 50,000 hrs.)



Replacement for high wattage CFL & HD lamps





LED HIGH POWER BULB

Here's a high wattage bulb to light up a larger space. Get the most out of your lighting and save more with less consumption of power, with retrofit option in existing high power luminaire.

Details	SSK-HPB-40W	SSK-HPB-60W	SSK-HPB-80W	SSK-HPB-100W
Input Power	40W	60W	80W	100W
Holder Base	E27		E40	
Size (mm)	ø145x220(H)	ø170x230(H)	ø190x275(H)	ø190x275(H)
Input Voltage Range	AC 90-300V, 50/60Hz			
Colour Temperature	6500K			
CRI	>75			
Beam Angle	>120°			
Lumens	>3800lm	>5700lm	>7600lm	>9500lm
Ingress Protection	IP20			
Operating Temperature Range	-20°C to 50°C			
Housing	Aluminum + Thermoplastic			



Lower power consumption and energy saving



Replacement for high wattage CFL & HD lamps

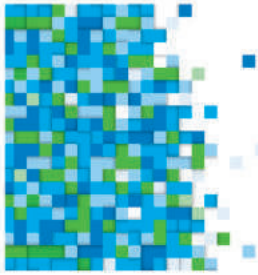


Long life span (Up to 50,000 hrs.)



Eco-friendly





LED HAMMER BULB (MAXGLOW)

Get max efficiency from your lighting with the Syska Maxglow. The bulb has a compact design and has a total output of 120 lumens which illuminates a space like never before.

Details	SSK-HAB-26W	SSK-HAB-35W	SSK-HAB-45W
Input Power	26W	35W	45W
Holder Base	B22/E27		
Size (mm)	Ø100x183(H)	Ø118x208(H)	
Input Voltage Range	AC 90-300V, 50Hz		
Colour Temperature	3000K-6500K		
CRI	>80		
Beam Angle	>220°		
Lumens	>3120lm	>4200lm	>5400lm
Ingress Protection	IP20		
Operating Temperature Range	-10°C to 45°C		
Housing	Aluminum + Thermoplastic		



Good colour rendering



No UV radiation



Lower power consumption and energy saving



Eco-friendly



Elliptical lens gives wide spread of light to cover maximum area

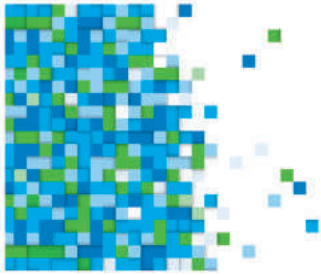


120 Lumens/W



Long life span
(Up to 50,000 hrs)





LED CANDLE BULB

Light up your chandeliers with the SYSKA LED Candle Bulbs. The bulbs look good on chandeliers and are used to light up cafes, home and office spaces.

Details	SSK-PAC-3W	SSK-PAC-3W-C	SSK-PAC-5W	SSK-PAC-5W-C	SSK-PAC-5W-D
Lens	Frosted	Clear	Frosted	Clear	Frosted
Input Power	3W		5W		
Holder Base	E14				
Size (mm)	ø38x107(H)				
Input Voltage Range	AC 90-300V, 50/60Hz				
Colour Temperature	2700K-6500K				
Type	Non-Dimmable	Non-Dimmable	Non-Dimmable	Non-Dimmable	Dimmable
CRI	>75				
Beam Angle	> 220°				
Lumens	275-310lm	275-310lm	375-430lm	375-430lm	325-400lm
Ingress Protection	IP44				
Operating Temperature Range	-20°C to +60°C				
Housing	Aluminum + Thermoplastic				



Eco-friendly



No UV radiation



Dimmable



Lower power consumption and energy saving



Elegant & traditional look



E14 Base



Long life span (Up to 50,000 hrs.)

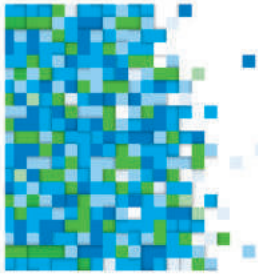




LED BATTENS & TUBES

The CFL fluorescent tube light is a thing of the past. Bask in the light of Syska LED battens and tubes to save on power consumption and experience maximum illumination.





LED 3-IN-1 T5 BATTEN

White, off-white and warm yellow, with the Syska T5 3-in-1 Batten you can choose from these cool shades of light. Simply switch it on and off to change the colour of the light.

Details	SSK-SQ2001-3IN1	SSK-SQ2201-3IN1
Input Power	20W	22W
Size (mm)	1180x22x36(H)	
Input Voltage Range	AC 90-300V, 50/60Hz	
Colour Temperature	3000K-4000K-6500K	
CRI	>75	
Beam Angle	>120°	
Lumens	1700~2000lm	1800~2100lm
Ingress Protection	IP20	
Operating Temperature Range	-20°C to +60°C	
Housing	Thermoplastic	



Lower power consumption and energy saving



Wide operating voltage



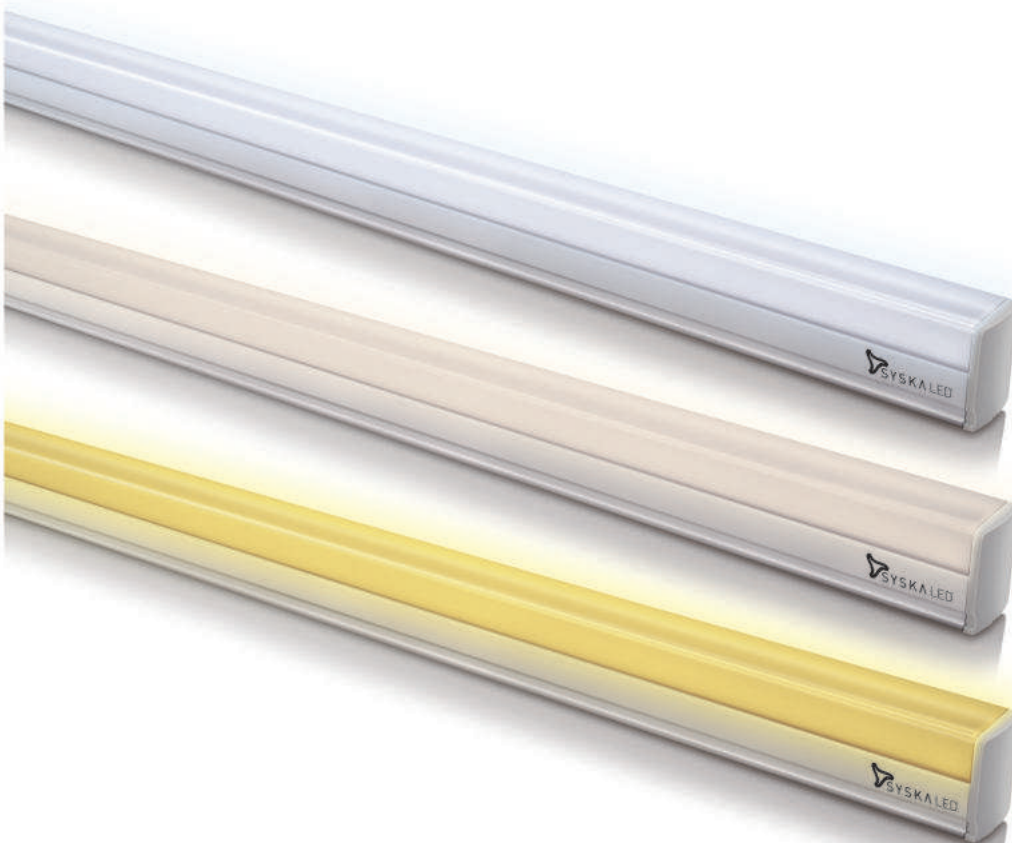
No UV radiation

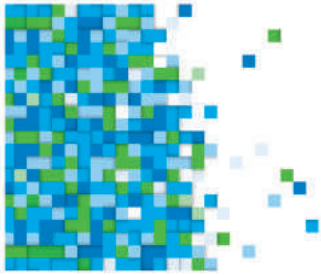


TriColour CCT
(3000~4000~6500K)



Eco-friendly





LED T5 BATTEN

Let your home be the brightest one in the neighbourhood with the Syska LED T5 batten. Its lumens brighten up every space. It's an eco-friendly batten that does no harm to the environment. What's more? You can save up to 70% energy.

Details	SSK-SQ0401	SSK-SQ0801	SSK-SQ1201	SSK-SQ2001	SSK-SQ2401	SSK-SQ2801
Input Power	4W	8W	12W	20W	24W	28W
Size (mm)	290x22x36(H)	600x22x36(H)		1180x22x36(H)		
Input Voltage Range	AC 90-300V, 50Hz					
Colour Temperature	3000K~6500K					
CRI	>80					
Beam Angle	>120°					
Lumens	>400lm	>800lm	>1200lm	>2000lm	>2400lm	>2800lm
Ingress Protection	IP20					
Operating Temperature Range	-20°C to 60°C					
Housing	Thermo-plastic	Thermo-plastic	Aluminum	Thermo-plastic	Aluminum	Aluminum



Lower power consumption and energy saving



No UV radiation



Surface mounted batten

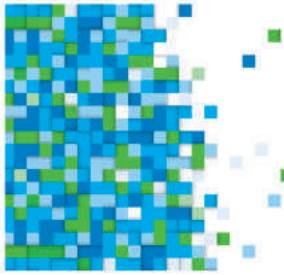


Wide operating voltage



Eco-friendly





LED T5 BATTEN

The Syska LED T5 Batten is extremely efficient when it comes to power saving. It successfully illuminates a space with its linear uniform light distribution.

Details	SSK-RA0401-N	SSK-RA0801-N	SSK-RA1801-N	SSK-RA2001-N
Input Power	4W	8W	18W	20W
Size (mm)	300x26x36(H)	600x26x36(H)	1200x26x36(H)	1200x26x36(H)
Input Voltage Range	AC 90-300V, 50/60Hz			
Colour Temperature	3000K-6500K			
CRI	>80			
Beam Angle	>120°			
Lumens	>360lm	>750lm	>1800lm	>2000lm
Ingress Protection	IP20			
Operating Temperature Range	-20°C to +60°C			
Housing	Thermoplastic			



Lower power consumption and energy saving



Wide operating voltage

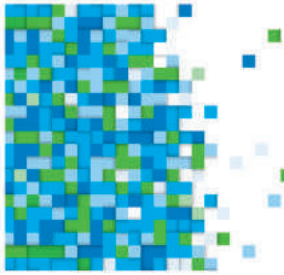


Eco-friendly



No UV radiation





LED T5 BATTEN

Make your home the brightest one with the SYSKA LED Slim T5 Batten Tube Lights. They are compact as compared to regular tube lights. The easy to install fixtures makes installation a hassle-free experience.

Details	SSK-T5-6W	SSK-T5-12W	SSK-T5-22W
Input Power	6W	12W	22W
Size (mm)	300x26x36(H)	600x26x36(H)	1200x26x36(H)
Input Voltage Range	AC 90-300V, 50/60Hz		
Colour Temperature	3000K-6500K		
CRI	>80		
Beam Angle	>120°		
Lumens	>540lm	>1080lm	>1900lm
Ingress Protection	IP20		
Operating Temperature Range	-20°C to +60°C		
Housing	Extruded Aluminum		



Lower power consumption and energy saving



No UV radiation

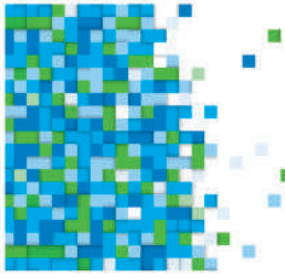


Eco-friendly



Wide operating voltage





LED T5 BATTEN (MAXGLOW)

Light up your home and office space with max brightness using the T5 Maxglow batten. Its lumens offer brightness which can lighten up your space unlike any other product.

Details	SSK-SQ1801-MG
Input Power	18W
Size (mm)	1100x22x36(H)
Input Voltage Range	AC 90-300V, 50Hz
Colour Temperature	3000K-6500K
CRI	>75
Beam Angle	>120°
Lumens	1800lm
Ingress Protection	IP20
Operating Temperature Range	-20°C to 60°C
Housing	Thermoplastic



Lower power consumption and energy saving



No UV radiation



Wide operating voltage

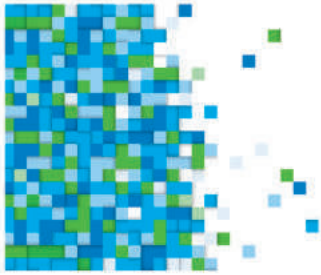


Eco-friendly



Surface mounted batten





LED BATTEN

Sleek, sturdy, powerful and energy efficient, the Syska LED Batten is a perfect replacement for those regular tube lights. The batten emits a linear uniform light that is best for regular indoor lighting purpose.

Details	SSK-ALB-10W	SSK-ALB-20W
Input Power	10W	20W
Size (mm)	600x25x28(H)	1200x25x28(H)
Input Voltage Range	AC 90-300V, 50Hz	
Colour Temperature	3000K~6500K	
CRI	>75	
Beam Angle	>120°	
Lumens	>1000lm	>2000lm
Ingress Protection	IP20	
Operating Temperature Range	-10°C to 50°C	
Housing	Aluminum + Thermoplastic with PC diffuser	



Surface mounted tube light



Wide operating voltage



Lower power consumption and energy saving

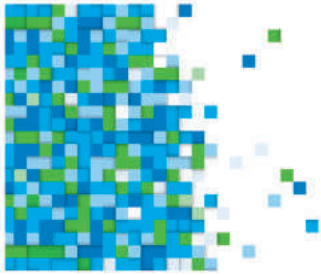


No UV radiation



Eco-friendly





LED T8 BATTEN

Illuminate your home with the sleek and stylish LED Batten. Its strong aluminium body helps to maintain thermal efficiency and this offers longer life. What's more? You can save up to 70% energy with a light that will always be light on your pocket.

Details	SSK-HL-T8-20W	SSK-HL-T8-36W
Input Power	20W	36W
Size (mm)	ø26x600(L)	ø26x1200(L)
Input Voltage Range	AC 90-300V, 50Hz	
Colour Temperature	3000K~6500K	
CRI	>75	
Beam Angle	>120°	
Lumens	>2000lm	>4320lm
Ingress Protection	IP20	
Operating Temperature Range	-20°C to 50°C	
Housing	Aluminum + Thermoplastic with PC diffuser	



Surface mounted tube light



Wide operating voltage



Lower power consumption and energy saving

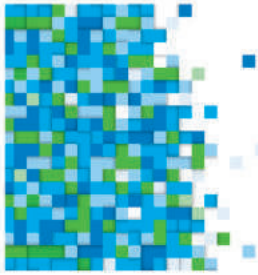


No UV radiation



Eco-friendly





LED EMERGENCY RECHARGEABLE BATTEN

A power cut at night should not put you in the dark. The Syska Emergency Batten is here to show you the light. Its settings allow you to increase or decrease the intensity of brightness. For a hassle-free on/off there's a pull switch cord attached to it. The product is light in weight which makes it travel-friendly.

Details	SSK-EMT-S-8W
Input Power	8W
Emergency Wattage	4-5W
Size (mm)	405x35x45(H)
Input Voltage Range	AC 220-240V, 50Hz
Colour Temperature	6500K
CRI	>75
Beam Angle	>120°
Lumens	>720lm
Lumens Backup	480lm
Charging Time	4-6 Hrs
Backup Time	Up to 3 Hrs - Bright light Up to 5 Hrs - Dim light
Ingress Protection	IP20
Operating Temperature Range	-20°C to 55°C
Housing	Thermoplastic



2000mAh Lithium ion In-built battery



LED charging indicator



Rechargeable batten



Light mode selection



Charging time 4-6 Hrs emergency back-up up to 3 Hrs



Eco-friendly

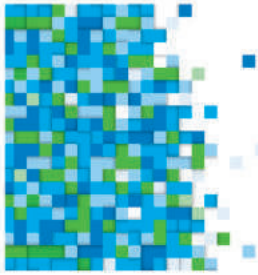


No UV radiation



Pull cord switch





LED EMERGENCY BATTEN

During power outages the Syska T5 Emergency Batten light is always by your side. The batten has a power backup of 3 to 4 hours, a slim design and is easy to install.

Details	SSK-EMT-1001-10W	SSK-EMT-2001-20W
Input Power	10W	20W
Size (mm)	575x36x22(H)	1214x40x28(H)
Input Voltage Range	AC 220-240V, 50Hz	
Colour Temperature	3000K-6500K	
CRI	>75	
Beam Angle	>120°	
Lumens	>1000lm	>2000lm
Charging Time	8-10 Hrs	
Backup Time	3 Hrs	4 Hrs
Lumens @Emergency	>450lm	>800lm
Ingress Protection	IP20	
Operating Temperature Range	-10°C to 50°C	
Housing	Thermoplastic	



2000mAh Lithium ion In-built battery



Eco-friendly



Usage time



Charging time 8-10 Hrs

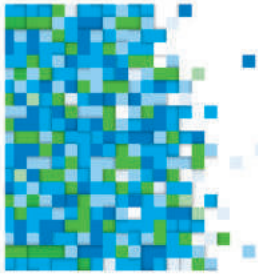


No UV radiation



Rechargeable batten





LED T5 RETROFIT TUBE

When compared with traditional FTLs, the Syska T5 LED Retrofit Tube has a longer lifespan, saves energy and provides better illumination.

- It is light in weight and comes with easy to install fixtures.

Details	SSK-T5T-9W-D	SSK-T5T-18W-D
Input Power	9W	18W
Base	G5	
Size (mm)	16~18x565(L)	16~18x1165(L)
Input Voltage Range	AC 220V, 5/60Hz (Direct AC supply, no additional ballast)	
Colour Temperature	3000K~6500K	
CRI	>80	
Beam Angle	>180°	
Lumens	>900lm	>1800lm
Ingress Protection	IP20	
Operating Temperature Range	-20°C to +50°C	
Housing	Glass & PC end caps	



Lower power consumption and energy saving



No UV radiation



G5 Base

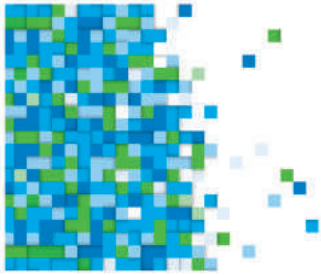


Wide operating voltage



Eco-friendly





LED T8 RETROFIT TUBE

The T8 Retrofit Tube has a slim design, and comes with light weight, strong plastic fixtures.

Details	SSK-TL-9W-I	SSK-TL-18W-I	SSK-TL-22W-I
Input Power	9W	18W	22W
Size (mm)	600x18	1200x18	1200x18
Input Voltage Range	AC 90-300V, 50/60Hz		
Colour Temperature	3000K-6500K		
CRI	>80		
Beam Angle	>180°		
Lumens	>990lm	>2150lm	>2640lm
Ingress Protection	IP20		
Operating Temperature Range	-20°C to +50°C		
Base	G13		
Housing	Poly Carbonate		



Lower power consumption and energy saving



Wide operating voltage



Eco-friendly



No UV radiation

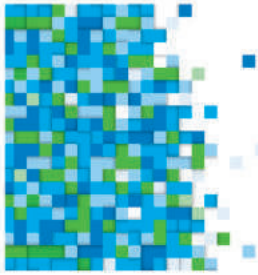


G13 Base



Existing choke should be bypass





LED T8 RETROFIT TUBE (HEAVY DUTY)

The T8 Retrofit LED Tube is a better and brighter alternative when compared to traditional fluorescent lamps and tube lights.

- It is light in weight and have easy to install fixtures.

Details	SSK-TL-18W-I-HD	SSK-TL-22W-I-HD
Input Power	18W	22W
Size (mm)	1200x18	
Input Voltage Range	AC 90-300V, 50/60Hz	
Colour Temperature	3000K-6500K	
CRI	>80	
Beam Angle	>180°	
Lumens	>2160lm	>2400lm
Ingress Protection	IP20	
Operating Temperature Range	-20°C to +50°C	
Base	G13	
Housing	Poly Carbonate	



Lower power consumption and energy saving



No UV radiation



G13 Base



Wide operating voltage

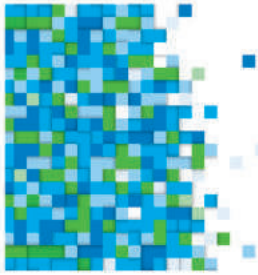


Heavy duty tube



Eco-friendly





LED T8 GLASS TUBES

Brighten up your office spaces, shops and hotels with the T8 Glass Tubes. Its retrofit fixture lets you install the lights with ease. They have a wide

- operating voltage and very low heating. The tube is environment-friendly and saves up to 70% energy.

Details	SSK-TL-18W-G	SSK-TL-20W-G
Input Power	18W	20W
Size (mm)	1200x18	
Input Voltage Range	AC 90-300V, 50Hz	
Colour Temperature	3000K-6500K	
CRI	>75	
Beam Angle	>120°	
Lumens	>1800lm	>2000lm
Ingress Protection	IP20	
Operating Temperature Range	-20°C to 50°C	
Base	G13	
Housing	Glass	



Lower power consumption and energy saving



Wide operating voltage

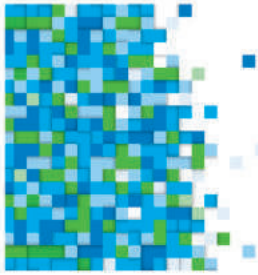


No UV radiation



Eco-friendly





LED TUBELIGHT FIXTURES

These are specially designed fixtures for Syska T8 Tubelights. The fixtures are light in weight, powder coated and come with detachable cap ends.

Details	SSK-T8P-0601	SSK-T8P-0602	SSK-T8P-1201	SSK-T8P-1202	SSK-T8F-0601	SSK-T8F-0602	SSK-T8F-1201	SSK-T8F-1202
Size (mm)	620x35x35(H)	620x70x35(H)	1220x35x35(H)	1220x70x35(H)	660x75x65(H)	660x115x65(H)	260x75x65(H)	1260x115x65(H)
Input Voltage Range	AC 90-300V, 50Hz							
Ingress Protection	IP20				IP65			
Operating Temperature Range	-20°C to 50°C							
Housing	CRCA				Thermoplastic			
Suitable for	1xT8[2']	2xT8[2']	1xT8[4']	2xT8[4']	1xT8[2']	2xT8[2']	1xT8[4']	2xT8[4']



Retrofit tubelight fixture



Eco-friendly



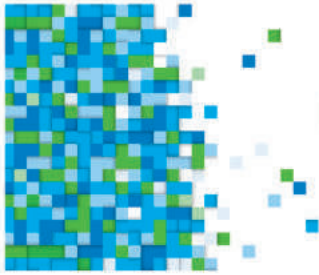


LED SPOT LIGHTS

Everyone loves the spotlight and you can enjoy it right at home with SYSKA LED Spot Lights. These are light in weight, easy to install and last longer than traditional halogen lamps.







LED MR16 LAMP (GU 5.3 BASE)

The Syska LED MR16 Lamps have special Cameta lenses that emit the right light for offices, malls, showrooms etc.

Details	SSK-MR16-COB-3W	SSK-MR16-COB-5W	SSK-MR16-COB-7W	SSK-MR16-COB-9W
Input Power	3W	5W	7W	9W
Holder Base	GU 5.3			
Size (mm)	ø50x60(H)	ø50x60(H)	ø50x80(H)	ø50x100(H)
Input Voltage Range	AC 220-240V, 50/60Hz			
Colour Temperature	2700K			
CRI	>80			
Beam Angle	38°			
Lumens	>250lm	>400lm	>525lm	>675lm
Ingress Protection	IP20			
Dimming Type	TRIAC Base Dimming			
Operating Temperature Range	-20°C to +60°C			
Housing	Pressure Die-cast Aluminum			



Elegant look



Medieval ambience



Dimmable

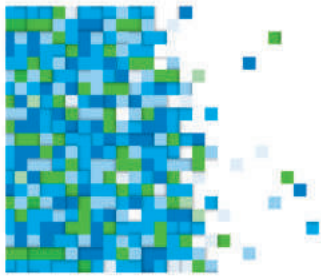


GU 5.3 Base



CREE mixed LED





LED CABINET LIGHT (ROUND & SQUARE)

These cabinet lights give an optimum light output with an installation structure that covers the recess arrangement in cabinets, shelves and closets. These lights also emit multiple shades.

Details	SSK-CL-R-2W-C	SSK-CL-R-2W-F	SSK-CL-S-2W-C	SSK-CL-S-2W-F
Lens Type	Clear	Frosted	Clear	Frosted
Shape	Round	Round	Square	Square
Input Power	2W	2W	2W	2W
Size (mm)	ø34x25(H)	ø34x25(H)	34x34x25(H)	34x34x25(H)
Cut Out (mm)	ø33	ø33	33x33	33x33
Input Voltage Range	AC 90-300V, 50/60Hz			
Colour Temperature	3000K-6500K (Green/Red/Blue)			
CRI	>80			
Beam Angle	90° - 120°			
Lumens	>160lm	>160lm	>160lm	>160lm
Ingress Protection	IP20			
Operating Temperature Range	-20°C to +60°C			
Housing	Pressure Die-cast Aluminum			



Lower power consumption and energy saving



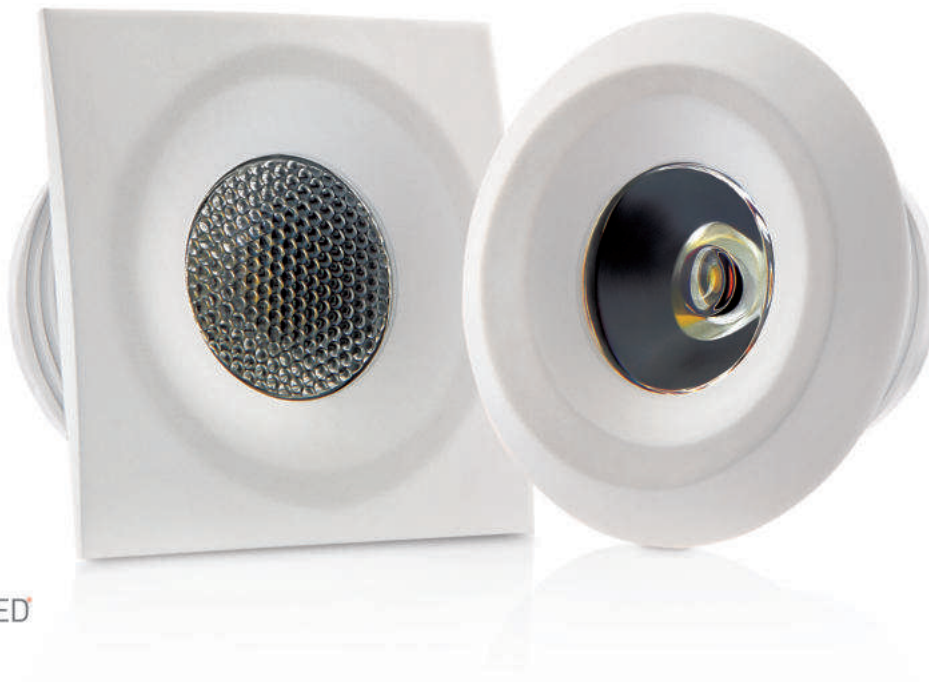
No UV radiation

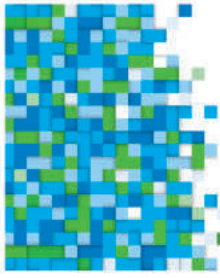


Wide operating voltage



Eco-friendly





LED CABINET LIGHT (SWIVEL)

An additional provision of swivel and angle orientation make these cabinet lights stand out from the regular static lights. Orientation of fixture helps to adjust the light spot in a 0-60° angle as required. Preferred spot light patterns can be created on a wall by fixing them in recess arrangement, therefore making these lights best suited for object lighting.

Details	SSK-SW-R-3W-C	SSK-SW-R-3W-F	SSK-SW-S-3W-C	SSK-SW-S-3W-F
Lens Type	Clear	Frosted	Clear	Frosted
Shape	Round	Round	Square	Square
Input Power	3W	3W	3W	3W
Size (mm)	ø50x50x18(H)	ø50x50x18(H)	50x50x18(H)	50x50x18(H)
Cut Out (mm)	ø43	ø43	43x43	43x43
Input Voltage Range	AC 90-300V, 50/60Hz			
Colour Temperature	3000K-6500K			
CRI	>80			
Swivel Angle	30° both side			
Beam Angle	45°			
Lumens	>240lm	>240lm	>240lm	>240lm
Ingress Protection	IP20			
Operating Temperature Range	-20°C to +60°C			
Housing	Pressure Die-cast Aluminum			



Lower power consumption and energy saving

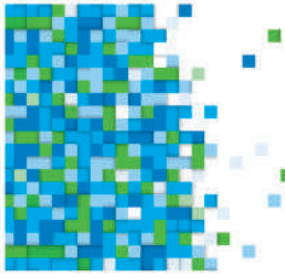


Eco-friendly



No UV radiation





LED MCL CABINET LIGHT

These MCL Cabinet Lights have a spotlight application, the optimum light is perfect to light up cabinets, shelves or closets. Easy to install, its structure is such that it covers the recess arrangement and looks clean.

Details	SSK-MCL-2W-C	SSK-MCL-2W-F	SSK-MCL-2W-S-C	SSK-MCL-2W-S-F
Input Power	2W	2W	2W	2W
Size (mm)	ø42x13(H)			
Cutout Size (mm)	ø32			
Input Voltage Range	AC 90-300V, 50Hz			
Colour Temperature	3000K/6500K/Red/Green/Blue/Pink			
CRI	>75			
Beam Angle	>45°			
Lumens	>140lm			
Ingress Protection	IP20			
Operating Temperature Range	-10°C to 50°C			
Housing	Aluminum			



Lower power consumption and energy saving



No UV radiation



Narrow Beam angle



Wide operating voltage



Eco-friendly

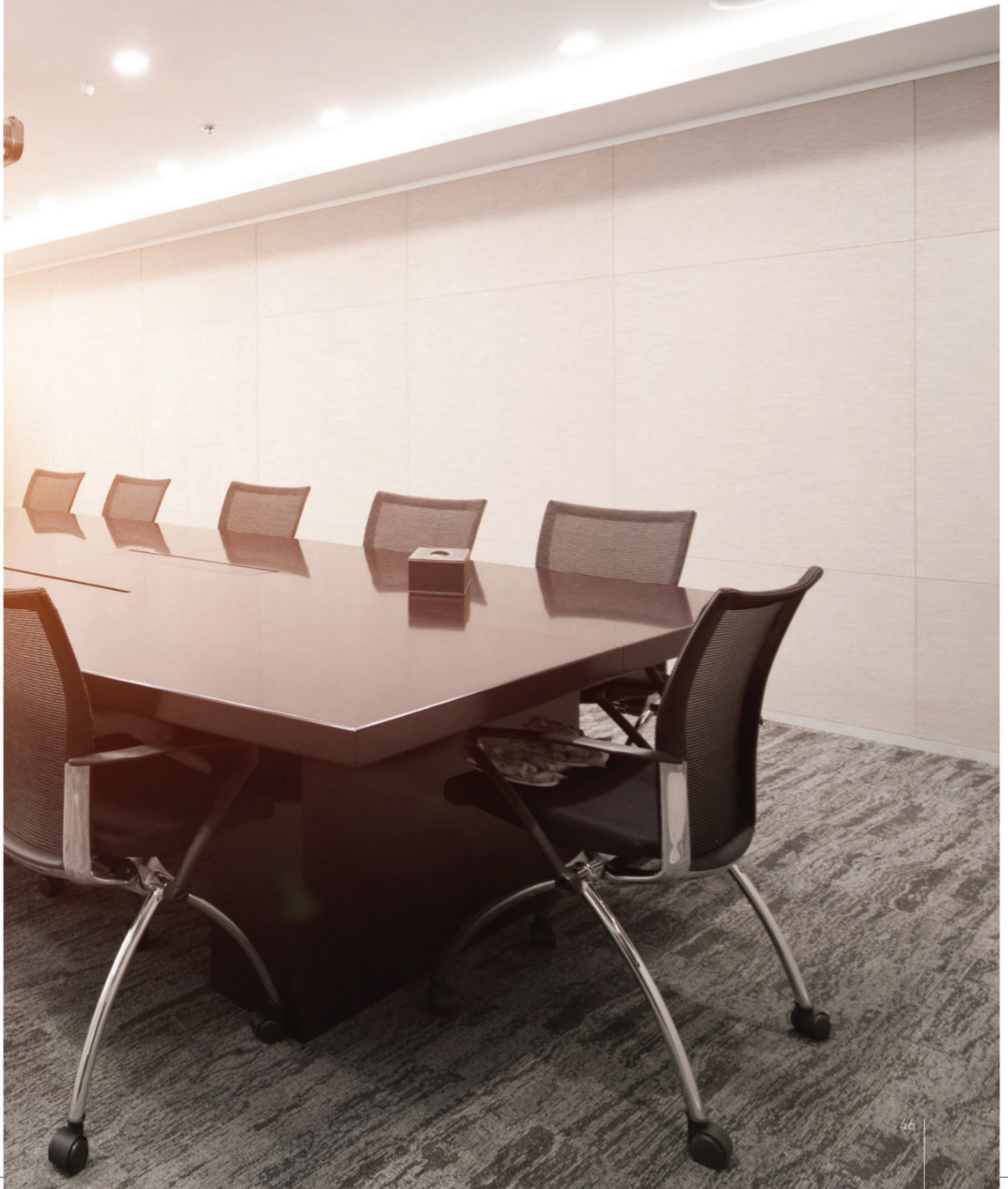


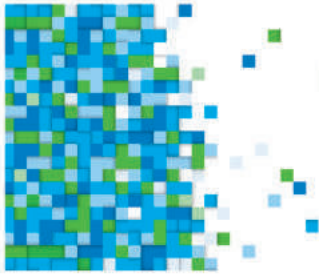


LED DOWN LIGHTS

These elegantly designed down lights look great on your ceiling and their superior quality and lighting capabilities are sure to set the mood in your home or office space.







LED DOWNLIGHT (ROUND)

Now you can light up your home and office spaces with these round downlights that are easy to install and help you see those spaces in a new light. Its thin trim provides a wide dispersion of light.

Details	SSK-RDL-R-5W	SSK-RDL-R-8W	SSK-RDL-R-12W	SSK-RDL-R-15W	SSK-RDL-R-20W
Input Power	5W	8W	12W	15W	20W
Size (mm)	ø82x36(H)	ø116x36(H)	ø166x36(H)	ø166x36(H)	ø220x36(H)
Cut Out (mm)	ø75	ø105	ø155	ø155	ø210
Input Voltage Range	AC 90~300V, 50/60Hz				
Colour Temperature	3000K~6500K				
CRI	>80				
Beam Angle	>120°				
Lumens	>500lm	>800lm	>1200lm	>1500lm	>2000lm
Ingress Protection	IP20				
Operating Temperature Range	-20°C to + 50°C				
Housing	Thermoplastic				



Lower power consumption and energy saving



Wide operating voltage



No UV radiation

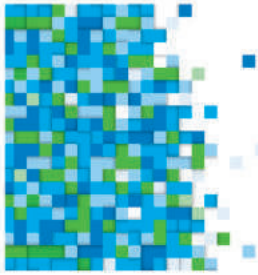


Slim design



Eco-friendly





LED DOWNLIGHT (SQUARE)

Presenting the next generation of plastic slim downlights. Now light up your home or workplace with the efficient SYSKA LED RDL Lights. They are aesthetically pleasing, help you to save more and provide better lighting to your space.

Details	SSK-RDL-S-5W	SSK-RDL-S-8W	SSK-RDL-S-12W	SSK-RDL-S-15W	SSK-RDL-S-20W
Input Power	5W	8W	12W	15W	20W
Size (mm)	82x82x36(H)	116x116x36(H)	166x166x36(H)	166x166x36(H)	220x220x36(H)
Cut Out (mm)	75x75	105x105	155x155	155x155	210x210
Input Voltage Range	AC 90-300V, 50/60Hz				
Colour Temperature	3000K-6500K				
CRI	>80				
Beam Angle	>120°				
Lumens	>500lm	>800lm	>1200lm	>1500lm	>2000lm
Ingress Protection	IP20				
Operating Temperature Range	-20°C to +50°C				
Housing	Thermoplastic				



Lower power consumption and energy saving



Wide operating voltage



No UV radiation

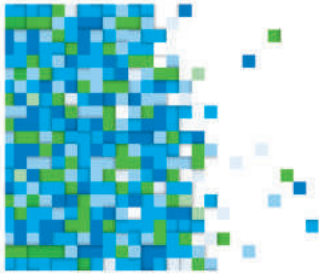


Slim design



Eco-friendly





LED TRIOLITE DOWNLIGHT (ROUND)

Now light up your home or work space with 3 different shades. Syska LED 3-in-1 Round Downlights are aesthetically pleasing and help you save more.

Details	SSK-RDL-3 IN 1-R-8W	SSK-RDL-3 IN 1-R-12W	SSK-RDL-3 IN 1-R-15W	SSK-RDL-3 IN 1-R-20W
Input Power	8W	12W	15W	20W
Size (mm)	Ø116x36(H)	Ø166x36(H)	Ø166x36(H)	Ø220x36(H)
Cut Out (mm)	Ø105	Ø155	Ø155	Ø210
Input Voltage Range	AC 90-300V, 50Hz			
Colour Temperature	3000K~4000K~6500K			
CRI	>75			
Beam Angle	>120°			
Lumens	600~800lm	950~1200lm	1200~1500lm	1600~2000lm
Ingress Protection	IP20			
Operating Temperature Range	-20°C to +50°C			
Housing	Thermoplastic			



Lower power consumption and energy saving



Wide operating voltage



Eco-friendly



Slim design

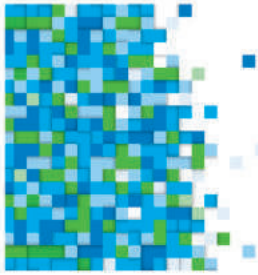


3-IN-1 CCT application



No UV radiation





LED TRIOLITE DOWNLIGHT (SQUARE)

Now light up your home or work space with 3 different shades. Syska LED 3-in-1 Square Downlights are aesthetically pleasing and help you save more.

Details	SSK-RDL-3 IN 1-S-8W	SSK-RDL-3 IN 1-S-12W	SSK-RDL-3 IN 1-S-15W	SSK-RDL-3 IN 1-S-20W
Input Power	8W	12W	15W	20W
Size (mm)	116x116x36(H)	166x166x36(H)	166x166x36(H)	220x220x36(H)
Cut Out (mm)	105x105	155x155	155x155	210x210
Input Voltage Range	AC 90-300V, 50Hz			
Colour Temperature	3000K~4000K~6500K			
CRI	>75			
Beam Angle	>120°			
Lumens	600~800lm	950~1200lm	1200~1500lm	1600~2000lm
Ingress Protection	IP20			
Operating Temperature Range	-20°C to +50°C			
Housing	Thermoplastic			



Lower power consumption and energy saving



Wide operating voltage



No UV radiation



Slim design

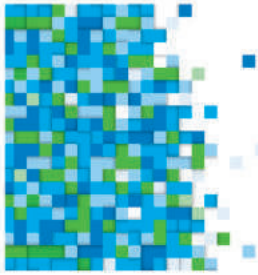


3-IN-1 CCT application



Eco-friendly





LED DOWNLIGHT (SMD)

Elegantly designed to fit seamlessly on a ceiling. These lights offer higher aesthetic value and can be configured in patterns and designs that go well with the overall decor around. Low power consumption combined with longer hours of lighting makes it the ideal alternative to CFLs.

Details	SSK-DLS-2.5"-3W	SSK-DLS-2.5"-5W	SSK-DLS-3"-7W	SSK-DLS-4"-9W	SSK-DLS-4"-12W	SSK-DLS-6"-15W	SSK-DLS-8"-18W	SSK-DLS-8"-24W
Input Power	3W	5W	7W	9W	12W	15W	18W	24W
Size (mm)	ø90x55(H)	ø90x55(H)	ø110x55(H)	ø145x65(H)	ø145x65(H)	ø195x65(H)	ø225x65(H)	ø225x65(H)
Cut Out (mm)	ø75	ø75	ø90	ø125	ø125	ø165	ø200	ø200
Input Voltage Range	AC 90-300V, 50/60Hz							
Colour Temperature	3000K~6500K							
CRI	>75							
Beam Angle	>120°							
Lumens	>240lm	>400lm	>560lm	>720lm	>960lm	>1200lm	>1440lm	>1920lm
Ingress Protection	IP20							
Operating Temperature Range	-20°C to +60°C							
Housing	Pressure Die-cast Aluminum							



Lower power consumption and energy saving



Wide operating voltage

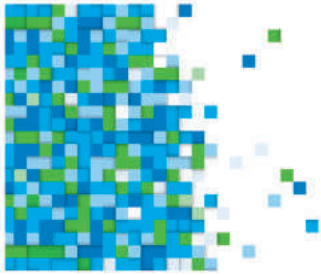


Eco-friendly



No UV radiation





LED DOWNLIGHT

Live up your home and office space with these recessed Syska LED Downlights that fit seamlessly into the ceiling and consume very little power. The finish and design adds a sense of style and elegance to the interior.

Details	SSK-PAD-0502	SSK-PAD-0702	SSK-PAD-0902
Input Power	5W	7W	9W
Size (mm)	Ø105x60(H)	Ø105x60(H)	Ø120x67(H)
Cutout Size (mm)	Ø90	Ø90	Ø100
Input Voltage Range	AC 90-300V, 50Hz		
Colour Temperature	3000K/6500K/Blue/Green/Purple/Red/Yellow		
CRI	>75		
Beam Angle	>120°		
Lumens for 6500K	>325lm	>490lm	>675lm
Ingress Protection	IP20		
Operating Temperature Range	0°C to 40°C		
Housing	Thermoplastic with PC milky diffuser		



Lower power consumption and energy saving



No UV radiation



Recessed downlight



Wide operating voltage

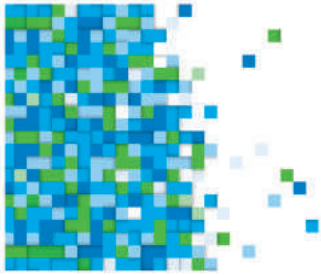


Suitable for junction box fixing



Eco-friendly





LED DOWNLIGHT

Spruce up your ceiling with these easy to install and elegantly designed downlights. Save on your electricity bills as the lights consume less power while emitting a bright beam of light.

Details	SSK-MPD-3W	SSK-MPD-5W
Input Power	3W	5W
Size (mm)	Ø81x46(H)	Ø81x46(H)
Cutout Size (mm)	Ø48	Ø48
Input Voltage Range	AC 90-300V, 50Hz	
Colour Temperature	2700K-6500K	
CRI	>75	
Beam Angle	>120°	
Lumens	>180lm	>300lm
Ingress Protection	IP20	
Operating Temperature Range	-10°C to 50°C	
Housing	Thermoplastic with milky PC cover	



Lower power consumption and energy saving



Wide operating voltage



No UV radiation



Recessed downlight

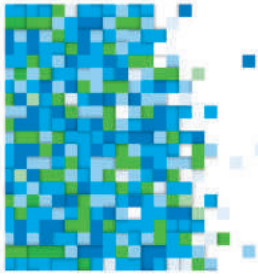


Eco-friendly



Junction box fitment





LED DOWNLIGHT- PRD

Switch to these recessed LED downlights to liven up your home and office spaces like never before. They are easy to install, slim in design and help you save up to 70% energy.

Details	SSK-PRD-0502	SSK-PRD-0702	SSK-PRD-0902	SSK-PRD-1202	SSK-PRD-1502
Input Power	5W	7W	9W	12W	15W
Size (mm)	Ø83x67(H)		Ø83x65(H)	Ø140x65(H)	
Cutout Size (mm)	Ø42		Ø43		
Input Voltage Range	AC 90-300V, 50Hz				
Colour Temperature	3000K/6500K/Blue/Green/Red				
CRI	>75				
Beam Angle	>120°				
Lumens for 6500K	>475lm	>630lm	>765lm	>1020lm	>1275lm
Ingress Protection	IP20				
Operating Temperature Range	-10°C to 50°C				
Housing	Thermoplastic				



Eco-friendly



Lower power consumption and energy saving

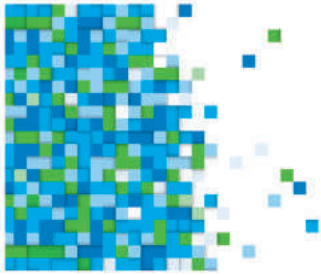


Long life span (Up to 50,000 hrs)



No UV radiation





LED DOWNLIGHT

White, warm white and yellow, the downlight comes with 3 shades you can pick from. Easy to install, these energy efficient lights beautify your ceiling with their chic design.

Details	SSK-DL-3 IN 1-7W
Input Power	7W
Size (mm)	Ø100x53(H)
Cutout Size (mm)	Ø75
Input Voltage Range	AC 90-300V, 50Hz
Colour Temperature	3000K-4000K-6500K
CRI	>75
Beam Angle	>120°
Lumens	>490lm
Ingress Protection	IP20
Operating Temperature Range	0°C to 40°C
Housing	Thermoplastic



Lower power consumption and energy saving



Wide operating voltage



No UV radiation



3-IN-1 CCT application

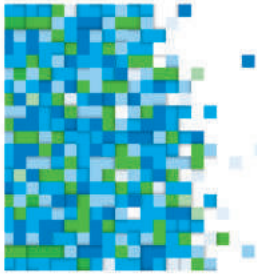


Eco-friendly



Recessed downlight





LED TWIST DOWNLIGHT

This downlight has a unique patented twist type design for easy serviceability. They have wireless connectivity and are great for lighting up homes, offices and departmental stores.

Details	SSK-TWC-5W	SSK-TWR-7W	SSK-TWS-5W	SSK-TWS-7W
Input Power	5W	7W	5W	7W
Size (mm)	Ø110x59(H)	Ø108x60(H)	Ø108x60(H)	Ø108x60(H)
Cutout Size (mm)	Ø85	Ø85	Ø85	Ø85
Input Voltage Range	AC 90-300V, 50Hz			
Colour Temperature	3000K~6500K			
CRI	>80			
Beam Angle	>90°	>90°	>90°	>120°
Lumens	>400lm	>680lm	>400lm	>638lm
Ingress Protection	IP20			
Operating Temperature Range	-10°C to 45°C			
Housing	Thermoplastic			



Lower power consumption and energy saving



Eco-friendly



Twist to open



Easy replacement



Wide operating voltage



No UV radiation



Twisted recessed downlight



SSK-TWS-5W & 7W

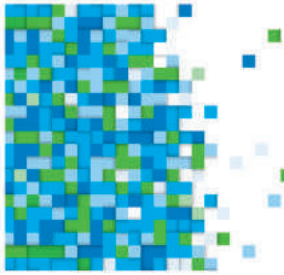


SSK-TWR-7W



SSK-TWC-5W





LED DOWNLIGHTS (COB)

The unique mirror structure on the inner side of the Syska LED Downlights help spread a wider beam of light. The plastic body is lightweight, sturdy and easy to install.

Details	SSK-LNTH-201K1	SSK-LNTH-201F1	SSK-LNTH-201H1	SSK-LNTH-201I1	SSK-LNTH-201J1
Input Power	4W	7W	13W	24W	32W
Size (mm)	ø68x47(H)	ø86x67(H)	ø86x65(H)	ø112x84.5(H)	ø131x75(H)
Cut Out (mm)	ø56	ø78	ø78	ø108	ø119
Input Voltage Range	AC 90-300V, 50/60Hz				
Colour Temperature	3000K-5000K				
CRI	>80				
Swivel Angle	45°				
Beam Angle	36°				
Lumens	>340lm	>595lm	>1105lm	>2040lm	>2720lm
Ingress Protection	IP20				
Operating Temperature Range	-20°C to +60°C				
Housing	Pressure Die-cast Aluminum				

Details	SSK-LNTH-201F3	SSK-LNTH-201H3	SSK-LNTH-201I3	SSK-LNTH-201K1-PA	SSK-LNTH-201F1-PA	SSK-LNTH-201H1-PA	SSK-LNTH-201I1-PA
Input Power	7W	13W	24W	4W	7W	13W	24W
Size (mm)	ø103x67(H)	ø103x85(H)	ø128x92(H)	ø70x48(H)	ø90x48(H)	ø113x65(H)	ø143x115(H)
Cut Out (mm)	ø88	ø88	ø108	ø65	ø80	ø95	ø125
Input Voltage Range	AC 90-300V, 50/60Hz						
Colour Temperature	3000K-5000K						
CRI	>80						
Swivel Angle	45°						
Beam Angle	36°						
Lumens	>595lm	>1105lm	>2040lm	>340lm	>595lm	>1105lm	>2040lm
Ingress Protection	IP20						
Operating Temperature Range	-20°C to +60°C						
Housing	Pressure Die-cast Aluminum			Thermoplastic + Pressure Die-cast Aluminum			



Lower power consumption and energy saving



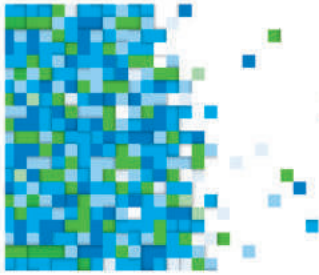
Wide operating voltage



No UV radiation



Eco-friendly



LED DOWNLIGHT - SLC COB

The very sleek and elegantly designed Syska COB Downlights are housed in a die-cast aluminum body. They are easy to install and are highly energy efficient.

Details	SSK-SLC-3W	SSK-SLC-6W	SSK-SLC-9W	SSK-SLC-12W	SSK-SLC-15W	SSK-SLC-18W
Input Power	3W	6W	9W	12W	15W	18W
Size (mm)	Ø80x20(H)	Ø90x22(H)	Ø95x22(H)		Ø110x22(H)	Ø120x23(H)
Cutout Size (mm)	Ø62	Ø72	Ø77		Ø96	Ø106
Input Voltage Range	AC 220-240V, 50-60Hz					
Colour Temperature	3000K-6500K					
CRI	>80					
Beam Angle	36°					
Lumens	>285lm	>570lm	>855lm	>1140lm	>1425lm	>1710lm
Ingress Protection	IP20					
Operating Temperature Range	-10°C to 50°C					
Housing	Die-Cast Aluminum					



Narrow beam angle



Eco-friendly



Long life span
(Up to 50,000 hrs)



Lower power consumption
and energy saving



Swivel orientation 60°

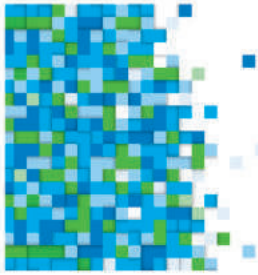


Elliptical lens gives
wide spread of light
to cover maximum area



No UV radiation





LED DOWNLIGHT - IDL COB (CRESTLIGHT)

Enhance the lighting of your home and office with the Syska Crestlight COB Downlights that are fix type, easy to install and have a long lifespan. There is zero maintenance once these lights are installed, they are energy efficient and are environment-friendly.

Details	SSK-IDL-7W	SSK-IDL-9W	SSK-IDL-12W	SSK-IDL-15W	SSK-IDL-18W	SSK-IDL-24W
Input Power	7W	9W	12W	15W	18W	24W
Size (mm)	Ø100x62(H)		Ø120x70(H)		Ø170x99(H)	
Cutout Size (mm)	Ø80		Ø95		Ø135	
Input Voltage Range	AC 220-240V, 50/60Hz					
Colour Temperature	3000K~6500K					
CRI	>80					
Beam Angle	36°					
Lumens @ 6500K	>700lm	>900lm	>1200lm	>1500lm	>1800lm	>2400lm
Ingress Protection	IP20					
Operating Temperature Range	-10°C to 50°C					
Housing	Die-Cast Aluminum					



Narrow beam angle



Eco-friendly



Long life span
(Up to 50,000 hrs)



Lower power consumption
and energy saving



Mirror Reflector
Technology

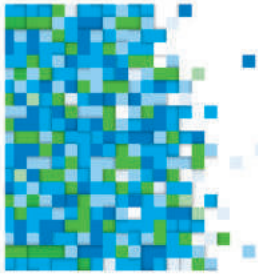


Elliptical lens gives
wide spread of light
to cover maximum area



No UV radiation





LED DOWNLIGHTS (COB)

Designed especially for low space recess mounting, these downlights by SYSKA LED Lights, offer an instant solution to directional lighting. These are retrofit, environment-friendly and energy-efficient. With colours made to match your decor, these lights are the future of lighting.

Details	SSK-DLC-2.5"-3W	SSK-DLC-2.5"-5W	SSK-DLC-3"-7W	SSK-DLC-4"-9W	SSK-DLC-4"-12W	SSK-DLC-6"-15W	SSK-DLC-8"-18W	SSK-DLC-8"-24W
Input Power	3W	5W	7W	9W	12W	15W	18W	24W
Size (mm)	ø90x55(H)	ø90x55(H)	ø110x55(H)	ø145x65(H)	ø145x65(H)	ø195x65(H)	ø225x65(H)	ø225x65(H)
Cut Out (mm)	ø75	ø75	ø90	ø125	ø125	ø165	ø200	ø200
Input Voltage Range	AC 90-300V, 50/60Hz							
Colour Temperature	3000K-6500K							
CRI	>75							
Beam Angle	90°							
Lumens	>240lm	>400lm	>560lm	>720lm	>960lm	>1200lm	>1440lm	>1920lm
Ingress Protection	IP20							
Operating Temperature Range	-20°C to +60°C							
Housing	Pressure Die-cast Aluminum							



Lower power consumption and energy saving



Wide operating voltage

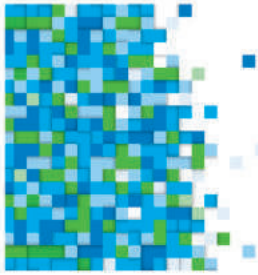


No UV radiation



Eco-friendly





LED COB DOWNLIGHT

The Syska LED COB downlights are elegantly designed to adorn your ceiling and illuminate spaces with their bright light. These are light in weight, easy to install and have a low power consumption.

Details	SSK-DLE-3W-COB	SSK-DLE-6W-COB	SSK-DLE-9W-COB	SSK-DLE-12W-COB	SSK-DLE-16W-COB	SSK-DLE-24W-COB	SSK-DLE-30W-COB
Input Power	3W	6W	9W	12W	16W	24W	30W
Size (mm)	Ø66x30(H)	Ø81x40(H)	Ø90x50(H)	Ø98x55(H)	Ø110x65(H)	Ø145x84(H)	Ø145x85(H)
Cutout Size (mm)	Ø55	Ø65	Ø75	Ø85	Ø90	Ø135	Ø135
Input Voltage Range	AC 90-300V, 50Hz						
Colour Temperature	3000K-6500K						
CRI	>75						
Beam Angle	24°-36°						
Lumens	>210lm	>420lm	>720lm	>960lm	>1280lm	>1920lm	>2400lm
Ingress Protection	IP20						
Operating Temperature Range	-10°C to 50°C						
Housing	Pressure Die-Cast Aluminum with clear PC cover						
Fixture	Swivel						
LED	COB Type						



Lower power consumption and energy saving



No UV radiation



Recessed COB downlight



Eco-friendly



Wide operating voltage



Swivel orientation 60°



Narrow beam angle



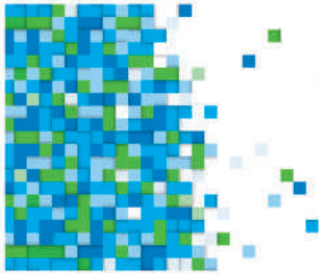


LED PANEL LIGHTS

Panel Lights add a touch of elegance on the ceiling of your home or office. They are of a superior quality and easy to install.







LED 2-IN-1 PANEL (ROUND)

Add style to your ceiling with the SYSKA LED 2-in-1 Dual Tone Panel Light. It comes with 2 different light colours to add an accent to the lighting panel and a sense of style to your ceiling.

Details	SSK-2 IN 1-6W-E	SSK-2 IN 1-9W-E	SSK-2 IN 1-16W-E	SSK-2 IN 1-24W-E
Input Power	3W+3W	6W+3W	12W+4W	18W+6W
Size (mm)	ø105x12(H)	ø145x12(H)	ø190x12(H)	ø240x12(H)
Cut Out (mm)	ø72	ø105	ø150	ø210
Input Voltage Range	AC 90-300V, 50/60Hz			
Colour Temperature (Main) Range	6500K			
Colour Temperature (Ring)	Warm White/Pink/Red/Green/Blue			
CRI	>80			
Beam Angle	>120°			
Lumens (Main+Ring)	>510lm	>765lm	>1360lm	>2040lm
Ingress Protection	IP20			
Operating Temperature Range	-20°C to +60°C			
Housing	Pressure Die-cast Aluminum with Poly Carbonate Ring			



Lower power consumption and energy saving



Wide operating voltage



Slim design

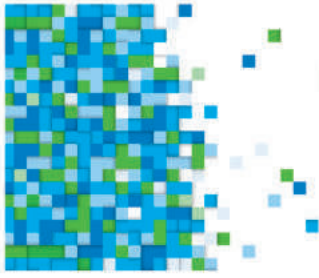


No UV radiation



Eco-friendly





LED 2-IN-1 PANEL (SQUARE)

Spruce up the decor of your home with these 2-in-1 LED Panel Lights. The different light colours add accents to the panels and a sense of style to your ceiling.

Details	SSK-2 IN 1-6W-F	SSK-2 IN 1-9W-F	SSK-2 IN 1-16W-F	SSK-2 IN 1-24W-F
Input Power	3W+3W	6W+3W	12W+4W	18W+6W
Size (mm)	105x105x12(H)	145x145x12(H)	190x190x12(H)	240x240x12(H)
Cut Out (mm)	72x72	105x105	150x150	210x210
Input Voltage Range	AC 90~300V, 50/60Hz			
Colour Temperature (Main) Range	6500K			
Colour Temperature (Ring)	Warm White/Pink/Red/Green/Blue			
CRI	>80			
Beam Angle	>120°			
Lumens (Main+Ring)	>510lm	>765lm	>1360lm	>2040lm
Ingress Protection	IP20			
Operating Temperature Range	-20°C to +60°C			
Housing	Pressure Die-cast Aluminum with Poly Carbonate Ring			



Lower power consumption and energy saving



Wide operating voltage



Slim design

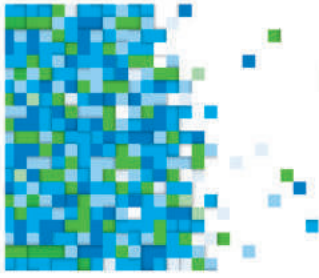


No UV radiation



Eco-friendly





LED 3-IN-1 PANEL (SQUARE)

The 3-in-1 LED square panel lights are easy to install and come with 3 different shades of light. They can be configured in patterns and designs that go well with the overall decor of your home/office.

Details	SSK-DLS-6''-12W-3 X 1-D	SSK-DLS-6''-15W-3 X 1-D
Input Power	12W	15W
Size (mm)	170x170x24(H)	
Cut Out (mm)	155x155	
Input Voltage Range	AC90-300V, 50/60Hz	
Colour Temperature	3000K~4000K~6500K	
CRI	>80	
Beam Angle	>120°	
Lumens (3000K~6500K)	960~1080lm	1200~1350lm
Ingress Protection	IP20	
Operating Temperature Range	-20°C to +60°C	
Housing	Pressure Die-cast Aluminum	



TriColour CCT
(3000~4000~6500K)



Lower power consumption
and energy saving



No UV radiation



Slim design



Eco-friendly

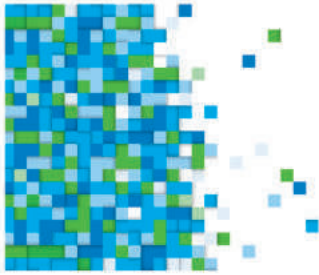


Wide operating voltage



3 switching





LED SLIM PANEL

Slim Disc Downlights by SYSKA LED Lights are elegantly designed ceiling lights. These are the slimmest panels, yet stylish looking. You can enjoy a full moon effect with their uniform and diffused illumination.

Details	SSK-SDL-3"-4W	SSK-SDL-4"-8W	SSK-SDL-6"-10W	SSK-SDL-8"-12W	SSK-SDL-10"-15W	SSK-SDL-12"-20W
Input Power	4W	8W	10W	12W	15W	20W
Input Voltage Range	AC90~300V, 50/60Hz					
Size (mm)	ø96x6(H)	ø120x6(H)	ø168x6(H)	ø217x6(H)	ø268x6(H)	ø310x6(H)
Cutout Size	ø80	ø100	ø150	ø195	ø245	ø290
Colour Temperature	3000K~6500K					
CRI	>75					
Lumens	>320lm	>640lm	>800lm	>960lm	>1200lm	>1700lm
Beam Angle	>120°					
Ingress Protection	IP20					
Operating Temperature Range	-20°C to +60°C					
Housing	Pressure Die-cast Aluminum					



Lower power consumption and energy saving



Wide operating voltage



Slim design

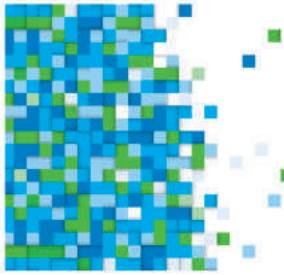


No UV radiation



Eco-friendly





LED PANEL LIGHTS (ROUND)

These edge-lit round LED Panel Lights are designed to light up indoor spaces such as corridors, conference rooms, malls, showrooms, etc. Apart from being energy-efficient and environment-friendly, SYSKA LED Panel Lights also give a sense of fine luxury through their classic design and aesthetics.

Details	SSK-PA2343E	SSK-PA2344E	SSK-PA2346F	SSK-PA2346E	SSK-PA2348E	SSK-PA3030E
Input Power	5W	8W	12W	15W	20W	24W
Size (mm)	ø85x13(H)	ø120x13(H)	ø170x13(H)	ø170x13(H)	ø225x13(H)	ø300x13(H)
Cut Out (mm)	ø72	ø110	ø160	ø160	ø210	ø290
Input Voltage Range	AC 90-300V, 50/60Hz					
Colour Temperature	3000K-6500K					
CRI	>75					
Beam Angle	>120°					
Lumens	>300lm	>480lm	>780lm	>975lm	>1300lm	>2160lm
Ingress Protection	IP20					
Operating Temperature Range	-20°C to +60°C					
Housing	Pressure Die-cast Aluminum					



Lower power consumption and energy saving



Wide operating voltage



Slim design

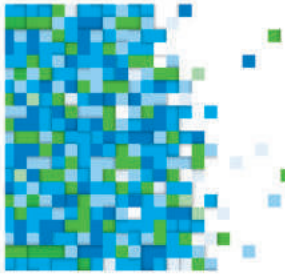


No UV radiation



Eco-friendly





LED PANEL LIGHTS (SQUARE)

These Syska LED Panel Lights are edge-lit to spread maximum light. They are best used for lighting up hallways, conference rooms, showrooms etc.

Details	SSK-PA2703E	SSK-PA2704E	SSK-PA2706F	SSK-PA2706E	SSK-PA2708E	SSK-PA3030F
Input Power	5W	8W	12W	15W	20W	24W
Size (mm)	85x85x13(H)	120x120x13(H)	170x170x13(H)	170x170x13(H)	225x225x13(H)	300x300x13(H)
Cut Out (mm)	72x72	110x110	160x160	160x160	210x210	290x290
Input Voltage Range	AC 90-300V, 50/60Hz					
Colour Temperature	3000K-6500K					
CRI	>75					
Beam Angle	>120°					
Lumens	>300lm	>480lm	>780lm	>975lm	>1300lm	>2160lm
Ingress Protection	IP20					
Operating Temperature Range	-20°C to +60°C					
Housing	Pressure Die-cast Aluminum					



Lower power consumption and energy saving



Wide operating voltage



Slim design

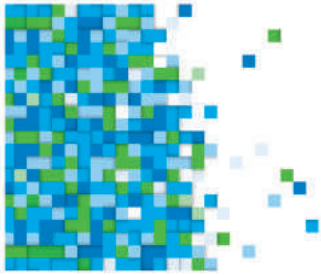


No UV radiation



Eco-friendly





LED PANEL LIGHT (ULTRA THIN) PAL-R

Ultra slim light weight body, easy to install and energy efficient, these round panel lights are brilliant when it comes to lighting up homes and offices.

Details	SSK-PAL-R-3W	SSK-PAL-R-6W	SSK-PAL-R-12W	SSK-PAL-R-15W	SSK-PAL-R-18W
Input Power	3W	6W	12W	15W	18W
Size (mm)	Ø85x27(H)	Ø120x27(H)	Ø170x30(H)		Ø220x30(H)
Cutout Size (mm)	Ø75	Ø105	Ø155		Ø205
Input Voltage Range	AC 220-240V, 50/60Hz				
Colour Temperature	3000K-6500K				
CRI	>75				
Beam Angle	>120°				
Lumens for 6500K	>170lm	>390lm	>900lm	>1125lm	>1450lm
Ingress Protection	IP20				
Operating Temperature Range	-10°C to 50°C				
Housing	Thermoplastic				



Recessed round panel



Good colour rendering



Long life span (Up to 50,000 hrs)



No UV radiation



Eco-friendly

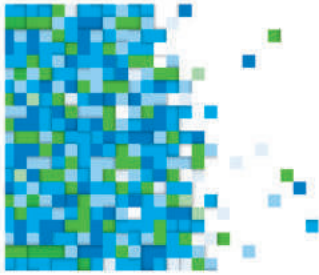


Elliptical lens gives wide spread of light to cover maximum area



Lower power consumption and energy saving





LED PANEL LIGHT (ULTRA THIN) PAL-S

Ultra slim light weight body, easy to install and energy efficient, these square panel lights are brilliant when it comes to lighting up homes and offices.

Details	SSK-PAL-S-3W	SSK-PAL-S-6W	SSK-PAL-S-12W	SSK-PAL-S-15W	SSK-PAL-S-18W
Input Power	3W	6W	12W	15W	18W
Size (mm)	85x85x27(H)	120x120x27(H)	120x120x30(H)		220x220x30(H)
Cutout Size (mm)	75x75	105x105	155x155		205x205
Input Voltage Range	AC 220-240V, 50/60Hz				
Colour Temperature	3000K-6500K				
CRI	>75				
Beam Angle	>120°				
Lumens for 6500K	>170lm	>390lm	>900lm	>1125lm	>1450lm
Ingress Protection	IP20				
Operating Temperature Range	-10°C to 50°C				
Housing	Thermoplastic				



Recessed square panel



Eco-friendly



No UV radiation



Good colour rendering



Elliptical lens gives wide spread of light to cover maximum area



Slim panel

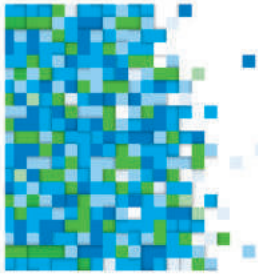


Long life span
(Up to 50,000 hrs)



Lower power consumption and energy saving





LED PANEL LIGHT - TPL (CROWN RECESS)

Create a bright space that exudes a happy vibe with these easy to install panel lights. These lights are glare free, require low maintenance and you can save up to 70% energy. Lamp source is replaceable without damaging the ceiling.

Details	SSK-TPL-6W	SSK-TPL-12W	SSK-TPL-15W	SSK-TPL-22W
Input Power	6W	12W	15W	22W
Size (mm)	Ø122x41(H)	Ø172x41(H)		Ø210x41(H)
Cutout Size (mm)	Ø108	Ø158		Ø196
Input Voltage Range	AC 220-240V, 50/60Hz			
Colour Temperature	3000K~6500K			
CRI	>70			
Beam Angle	>120°			
Lumens	>510lm	>1020lm	>1275lm	>1870lm
Ingress Protection	IP20			
Operating Temperature Range	-10°C to 45°C			
Housing	Thermoplastic			



Recessed round panel



Twist panel light



Slim design



Easy installation

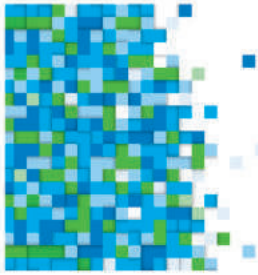


Easy replacement



Ceiling secure





LED PANEL LIGHT - PPL (CROWN RECESS)

Enliven your space with these panel lights that are glare free and have a wide dispersion of light. They are easy to install, slim in design and help you save up to 70% energy. Lamp source is replaceable without damaging the ceiling.

Details	SSK-PPL-6W	SSK-PPL-12W	SSK-PPL-15W	SSK-PPL-22W
Input Power	6W	12W	15W	22W
Size (mm)	122x122x41(H)	172x172x41(H)		210x210x41(H)
Cutout Size (mm)	108x108	158x158		196x196
Input Voltage Range	AC 220-240V, 50/60Hz			
Colour Temperature	3000K-6500K			
CRI	>70			
Beam Angle	>120°			
Lumens	>510lm	>1020lm	>1275lm	>1870lm
Ingress Protection	IP20			
Operating Temperature Range	-10°C to 45°C			
Housing	Thermoplastic			



Recessed square panel



Press fit panel light



Slim design



Easy installation

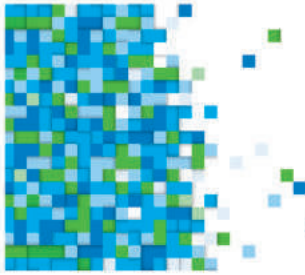


Easy replacement



Ceiling secure





LED ADJUSTABLE RIMLESS PANEL LIGHT

Make your home the brightest one in the neighbourhood with these adjustable rimless panel lights. The lights are easy to install, have a rimless design and help in reducing power consumption. The adjustable recess mounting arrangement is suitable for any cut hole.

Details	SSK-ARIM-R-12W	SSK-ARIM-R-18W	SSK-ARIM-R-24W
Input Power	12W	18W	24W
Size (mm)	Ø120x30(H)	Ø170x32(H)	Ø223x32(H)
Cutout Size (mm)	Ø75-100	Ø75-150	Ø75-200
Input Voltage Range	AC 220-240V, 50/60Hz		
Colour Temperature	3000K-6500K		
CRI	>70		
Beam Angle	>120°		
Lumens for 6500K	>960lm	>1530lm	>2160lm
Ingress Protection	IP20		
Operating Temperature Range	-10°C to 50°C		
Housing	Thermoplastic Housing + Metal Clamp + PC Diffuser		



Recessed round panel



Light weight



Rimless panel

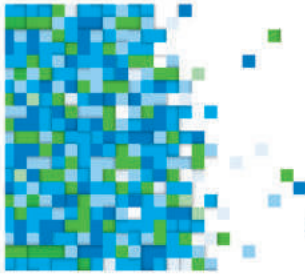


2 Years warranty



Slim design





LED ADJUSTABLE RIMLESS PANEL LIGHT

Make your home the brightest one in the neighbourhood with these adjustable rimless panel lights. The lights are easy to install, have a rimless design and help in reducing power consumption. The adjustable recess mounting arrangement is suitable for any cut hole.

Details	SSK-ARIM-S-12W	SSK-ARIM-S-18W	SSK-ARIM-S-24W
Input Power	12W	18W	24W
Size (mm)	120x120x30(H)	170x170x32(H)	223x223x32(H)
Cutout Size (mm)	75-100	75-150	75-200
Input Voltage Range	AC 220-240V, 50/60Hz		
Colour Temperature	3000K-6500K		
CRI	>70		
Beam Angle	>120°		
Lumens for 6500K	>960lm	>1530lm	>2160lm
Ingress Protection	IP20		
Operating Temperature Range	-10°C to 50°C		
Housing	Thermoplastic Housing + Metal Clamp + PC Diffuser		



Recessed square panel



Light weight



Rimless panel

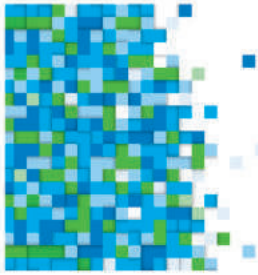


2 Years warranty



Slim design





LED PANEL LIGHT (BACKLIT)

SYSKA LED Panel Lights are crafted for luxury. Their frosted cover and slim frame makes them perfect for your high-end interior lighting. Their primary usage includes lighting up of homes, office cabins, etc.

Details	SSK-PAB-6060B	SSK-PAB-30120-36W
Input Power	36W	
Size (mm)	595x595x60(H)	1260x320x65(H)
Input Voltage Range	AC 90-300V, 50/60Hz	
Colour Temperature	3000K~6500K	
CRI	>80	
Beam Angle	>120°	
Lumens	>3600lm	
Ingress Protection	IP20	
Operating Temperature Range	-20°C to +60°C	
Mounting	Armstrong, Surface, Recessed, Suspended	
Housing	MS Sheet	



Lower power consumption and energy saving



Wide operating voltage



Eco-friendly



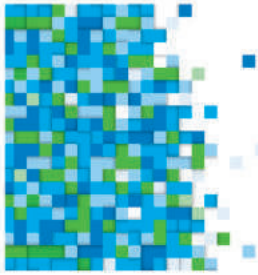
No UV radiation



SSK-PAB-6060B



SSK-PAB-30120-36W



LED BACKLIT PANEL (2X2)

Beautify your ceiling with these Syka LED Backlit Panel Lights. The lights save on energy consumption and have no adverse effect on the environment.

Details	SSK-TVP-6060-36W	SSK-TVP-6060-EXD-36W
Input Power	36W	
Size (mm)	600x600x50(H)	
Input Voltage Range	AC 90~300V, 50/60Hz	
Colour Temperature	3000K~6500K	
CRI	>80	
Beam Angle	>120°	
Lumens	>3600lm	
Ingress Protection	IP20	
Operating Temperature Range	-20°C to +60°C	
Mounting	Armstrong, Recessed, Suspended	
Housing	Sheet Aluminum	



Lower power consumption and energy saving



Wide operating voltage



Slim design



No UV radiation

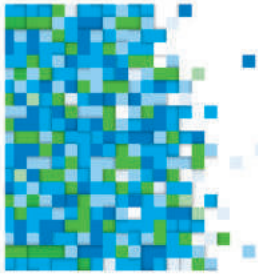


Eco-friendly



2x2 Panel light





LED BACKLIT PANEL (1X4)

These Backlit LED Panel Lights provide optimum lighting conditions for home and office. They are easy to install and help save up to 70% power.

Details	SSK-TVP-12030-36W
Input Power	36W
Size (mm)	1200x300x50(H)
Input Voltage Range	AC 90-300V, 50/60Hz
Colour Temperature	3000K-6500K
CRI	>80
Beam Angle	>120°
Lumens	>3600lm
Ingress Protection	IP20
Operating Temperature Range	-20°C to +60°C
Mounting	Armstrong, Recessed, Suspended
Housing	Sheet Aluminum



Lower power consumption and energy saving



1x4 ft panel light



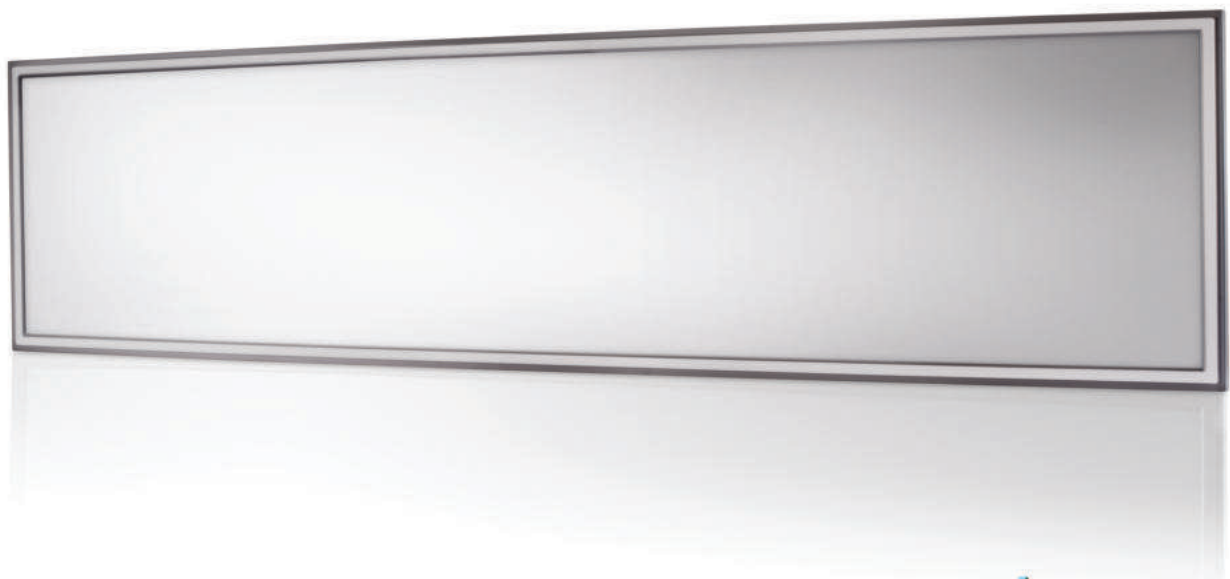
Wide operating voltage

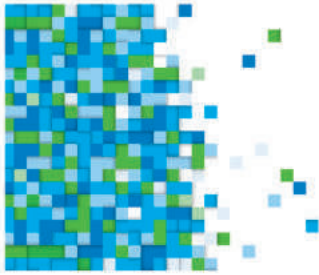


No UV radiation



Eco-friendly





LED PANEL LIGHT

The lights have a sleek design that truly adds charm to your home and office space. They fit seamlessly into your ceiling; they are extremely energy efficient and environment-friendly.

Details	SSK-FP-6060-36W-E	SSK-FP-6060-40W-E	SSK-FP-6060-36W-NS
Input Power	36W	40W	36W
Size (mm)	595x595x10(H)		
Input Voltage Range	AC 90-300V, 50Hz/60Hz		
Colour Temperature	3000K-6500K		
CRI	>75		
Beam Angle	>120°		
Lumens	>3600lm	>4000lm	>3600lm
Ingress Protection	IP20		
Operating Temperature Range	-10°C to 50°C		
Mounting	Armstrong		Armstrong/Surface
Housing	Extruded Aluminum with PC diffuser		



Wide operating voltage



Slim design



2X2 Panel light



Lower power consumption and energy saving



No UV radiation



Eco-friendly



SSK-FP-6060-NS



SSK-FP-6060-E

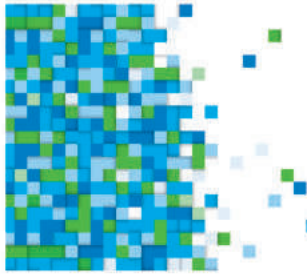


LED CEILING LIGHTS

Home and office ceilings can look great with SYSKA LED Ceiling Lights. Choose from a wide range of elegant and subtle designs.







LED SURFACE LIGHT (ROUND)

Light up your home or office space with these SYSKA LED Surface Downlights which are designed to provide great lighting conditions. The lights are easy to fix and have a compact, lightweight design.

Details	SSK-SDC-6W-N	SSK-SDC-12W-N	SSK-SDC-15W-N	SSK-SDC-18W-N	SSK-SDC-22W-N	SSK-SDC-30W-N
Input Power	6W	12W	15W	18W	22W	30W
Size (mm)	ø120x32(H)	ø170x32(H)	ø170x32(H)	ø225x32(H)	ø225x32(H)	ø300x32(H)
Input Voltage Range	AC 90~300V, 50/60Hz					
Colour Temperature	3000K~6500K					
CRI	>75					
Beam Angle	>120°					
Lumens	>420lm	>900lm	>1200lm	>1440lm	>1760lm	>2400lm
Ingress Protection	IP20					
Operating Temperature Range	-20°C to +45°C					
Housing	Pressure Die-cast Aluminum					



Lower power consumption and energy saving



Wide operating voltage

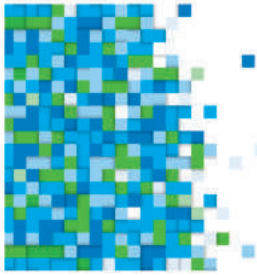


Eco-friendly



No UV radiation





LED SURFACE LIGHT (SQUARE)

Light up your home or office space with these SYSKA LED Surface Downlights which are designed to provide great lighting conditions. The lights are easy to fix and have a compact, lightweight design.

Details	SSK-SDS-6W-N	SSK-SDS-12W-N	SSK-SDS-15W-N	SSK-SDS-18W-N	SSK-SDS-22W-N	SSK-SDS-30W-N
Input Power	6W	12W	15W	18W	22W	30W
Size (mm)	120x120x32(H)	170x170x32(H)	170x170x32(H)	225x225x32(H)	225x225x32(H)	300x300x32(H)
Input Voltage Range	AC 90~300V, 50/60Hz					
Colour Temperature	3000K~6500K					
CRI	>75					
Beam Angle	>120°					
Lumens	>420lm	>900lm	>1200lm	>1440lm	>1760lm	>2400lm
Ingress Protection	IP20					
Operating Temperature Range	-20°C to 45°C					
Housing	Pressure Die-cast Aluminum					



Lower power consumption and energy saving



Wide operating voltage

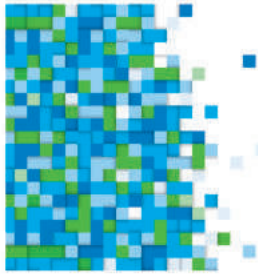


Eco-friendly



No UV radiation





LED SURFACE PANEL LIGHT (DAZZLE)

These rimless panel lights accentuate home and office spaces with its slim design and bright light. They are environment-friendly and help in conserving energy.

Details	SSK-RIMS-R-6W	SSK-RIMS-R-10W	SSK-RIMS-R-15W	SSK-RIMS-R-20W
Input Power	6W	10W	15W	20W
Size (mm)	Ø100x31(H)	Ø125x31(H)	Ø150x31(H)	Ø200x31(H)
Input Voltage Range	AC 220-240V, 50/60Hz			
Colour Temperature	3000K-6500K			
CRI	>75			
Beam Angle	90°-120°			
Lumens	>432lm	>760lm	>1200lm	>1600lm
Ingress Protection	IP20			
Operating Temperature Range	-10°C to 50°C			
Housing	Thermoplastic housing + Metal clamp + PC Diffuser			



Slim design



Good colour rendering



Long life span
(Up to 50,000 hrs)



No UV radiation



Eco-friendly



Lower power consumption
and energy saving



Round surface
rimless panel



Elliptical lens gives
wide spread of light
to cover maximum area

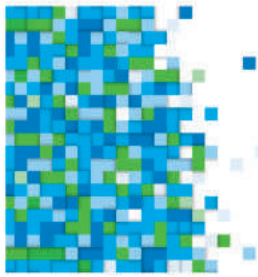


Light weight



Rimless panel





LED SURFACE PANEL LIGHT (DAZZLE)

These rimless panel lights accentuate home and office spaces with its slim design and bright light. They are environment-friendly and help in conserving energy.

Details	SSK-RIMS-S-6W	SSK-RIMS-S-10W	SSK-RIMS-S-15W	SSK-RIMS-S-20W
Input Power	6W	10W	15W	20W
Size (mm)	100x100x31(H)	125x125x31(H)	150x150x31(H)	200x200x31(H)
Input Voltage Range	AC 220-240V, 50/60Hz			
Colour Temperature	3000K-6500K			
CRI	>75			
Beam Angle	90°-120°			
Lumens	>432lm	>760lm	>1200lm	>1600lm
Ingress Protection	IP20			
Operating Temperature Range	-10°C to 45°C			
Housing	Die-cast Aluminum			



Slim design



Good colour rendering



Long life span
(Up to 50,000 hrs)



No UV radiation



Eco-friendly



Lower power consumption
and energy saving



Elliptical lens gives
wide spread of light
to cover maximum area



Light weight

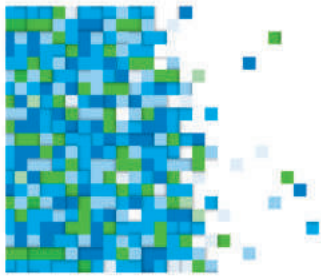


Rimless panel



Square surface
rimless panel





LED SURFACE PANEL LIGHT - TSP (VERTEX)

See your home in a new light with these panel lights from Syska LED. They are easy to install, have a slim design and spread maximum illumination.

Details	SSK-TSP-6W	SSK-TSP-12W	SSK-TSP-15W	SSK-TSP-22W
Input Power	6W	12W	15W	22W
Size (mm)	Ø122x41(H)	Ø172x41(H)		Ø210x41(H)
Input Voltage Range	AC 220-240V, 50/60Hz			
Colour Temperature	3000K-6500K			
CRI	>70			
Beam Angle	>120°			
Lumens	>510lm	>1020lm	>1275lm	>1870lm
Ingress Protection	IP20			
Operating Temperature Range	-10°C to 45°C			
Housing	Thermoplastic			



Surface mounted round panel light



Slim design



Ceiling secure

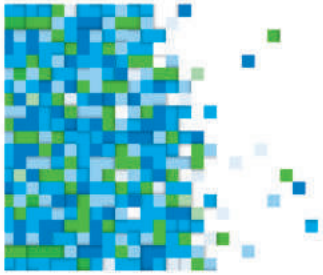


Twist panel light



Easy replacement





LED SURFACE PANEL LIGHT - PSP (VERTEX)

Bright enough, right enough. These panel lights are easy to install, have a slim design and are extremely efficient.

Details	SSK-PSP-6W	SSK-PSP-12W	SSK-PSP-15W	SSK-PSP-22W
Input Power	6W	12W	15W	22W
Size (mm)	122x122x41(H)	172x172x41(H)		210x210x41(H)
Input Voltage Range	AC 220-240V, 50/60Hz			
Colour Temperature	3000K-6500K			
CRI	>70			
Beam Angle	>120°			
Lumens	>510lm	>1020lm	>1275lm	>1870lm
Ingress Protection	IP20			
Operating Temperature Range	-10°C to 45°C			
Housing	Thermoplastic			



Surface mounted square panel light



Slim design



Ceiling secure



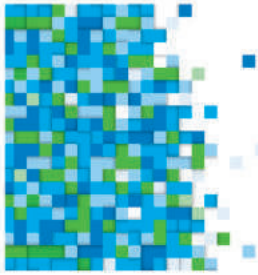
Twist panel light



Easy replacement







LED DETACHABLE SURFACE LIGHT (CELESTE)

The Detachable Surface Lights are a brighter alternative to regular CFL panel lights. They are safe on the environment and are easy to install as they come with a detachable ring.

Details	SSK-DSL-7W	SSK-DSL-9W	SSK-DSL-12W
Input Power	7W	9W	12W
Size (mm)	Ø85x48(H)	Ø110x48(H)	Ø135x48(H)
Input Voltage Range	AC 220-240V, 50/60Hz		
Colour Temperature	3000K~6500K		
CRI	>75		
Beam Angle	>120°		
Lumens @ 6500K	>700lm	>900lm	>1200lm
Ingress Protection	IP20		
Operating Temperature Range	-10°C to 50°C		
Housing	Thermoplastic		



Surface mounted downlight



Good colour rendering



Long life span (Up to 50,000 hrs)



No UV radiation



Eco-friendly



Elliptical lens gives wide spread of light to cover maximum area



Light weight



Detachable ring



Lower power consumption and energy saving



LED TRACK LIGHTS

The Track Lights are perfect for lighting up showrooms and boutiques where there is a need for a focused lighting. These lights are set up along a rail and can be moved to light the subject in focus.



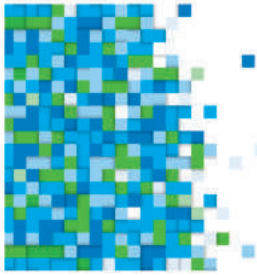




SSK-TRE



SSK-TRS



LED TRACK LIGHT

LED Track Lights are perfect when you want to illuminate an object with multiple lights. The fixtures rotate at a 360° angle, and the track mounting allows you to move the lights as per your convenience.

Details	SSK-TRE-3W	SSK-TRE-6W	SSK-TRE-9W	SSK-TRE-16W	SSK-TRE-24W	SSK-TRE-30W	SSK-TRE-40W	SSK-TRE-50W
	SSK-TRS-3W	SSK-TRS-6W	SSK-TRS-9W	SSK-TRS-16W	SSK-TRS-24W	SSK-TRS-30W	SSK-TRS-40W	SSK-TRS-50W
Input Power	3W	6W	9W	16W	24W	30W	40W	50W
Size (mm)	40x75(H)	50x95(H)	60x105(H)	75x150(H)	100x175(H)	100x175(H)	115x190(H)	115x190(H)
Input Voltage Range	AC 90-300V, 50Hz							
Colour Temperature	3000K~6500K							
CRI	>80							
Beam Angle	24°~36°							
Lumens	>300lm	>600lm	>900lm	>1600lm	>2400lm	>3000lm	>4000lm	>5000lm
Ingress Protection	IP20							
Operating Temperature Range	-20°C to 50°C							
Housing	Pressure Die-Cast Aluminum							
Mounting	For TRE - Track Mounted, For TRS - Surface Mounted							



Track & surface mounted



Wide operating voltage



Lower power consumption and energy saving



Eco-friendly



No UV radiation



COB track light



Control beam angle

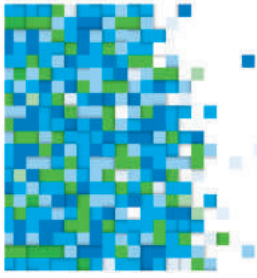


LED PL & PLL

Syska PL and PLL lights are great for illuminating spaces with optimum brightness. They are retrofit for conventional PL & PLL lamps and help to save a lot on power consumption.







LED RETROFIT LAMP (PL & PLL)

These lamps come with a retrofit base which makes them compliant with your existing lamp holder. They also offer a longer life cycle, high energy efficiency and high lumens.

Details	SSK-PL-8W-N	SSK-PLL-18W-N
Input Power	8W	18W
Size (mm)	146x35.3(H)	410x46x28(H)
Input Voltage Range	AC 90-300V, 50/60Hz	
Lamp Base	G24	2G11
Colour Temperature	3000K-6500K	
CRI	>75	
Beam Angle	>120°	
Lumens	>750lm	>1890lm
Operating Temperature Range	-20°C to +60°C	
Ingress Protection	IP20	
Housing	Extruded Aluminum & Polycarbonate Milky Diffuser	



No UV radiation



Eco-friendly



Lower power consumption and energy saving



Wide operating voltage

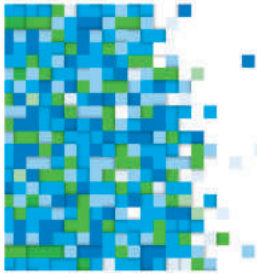


Use G24/2G11 base



Retrofit replacement





LED PL & PLL (GLASS)

These LED glass lamps, are similar to conventional lamps in shape and size, but offer higher brightness. The lamps are great when it comes to lighting up offices, homes and commercial spaces.

Details	SSK-PL-8W-G	SSK-PLL-18W-G
Input Power	8W	18W
Size (mm)	146x35.3(H)	410x46x28(H)
Input Voltage Range	AC 90-300V, 50Hz	
Lamp Base	G24	2G11
Colour Temperature	3000K~6500K	
CRI	>75	
Beam Angle	>150°	
Lumens for 6500K	>800lm	>1800lm
Ingress Protection	Ip20	
Operating Temperature Range	-20°C to 60°C	
Housing	Glass	
Pin Type	2 Pin	4 Pin



Retrofit replacement for panel & downlight



Wide operating voltage



Lower power consumption and energy saving



No UV radiation



Eco-friendly



Use G24/2G11 base



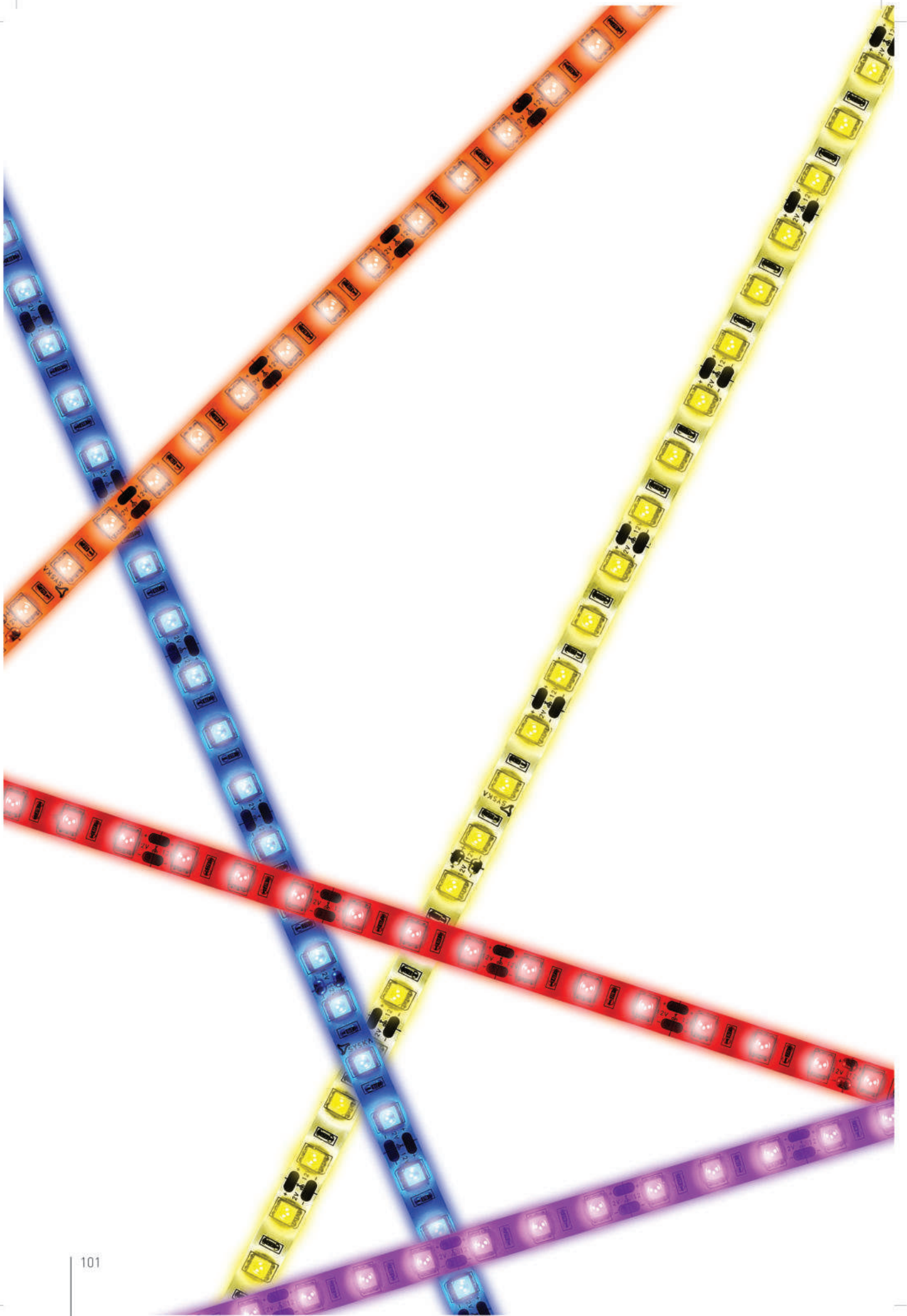


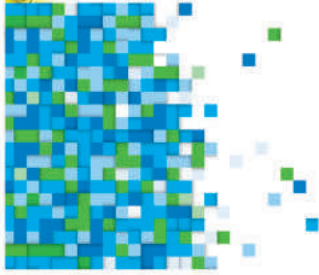
LED STRIP LIGHTS

Add custom accents to your home and office spaces and bring them to life with SYSKA LED Strip Lights. These LED Strip Lights are customisable and allow you to easily change the lighting mood. They are easy to install and can be wound up in a coil for storage.









LED STRIP LIGHTS

LED Strip Lights give you the design flexibility of using them as decorative light-rims on various structures. They can also be wound up, coiled or used in any other non-linear or abstract design. This combined with their five colour options, open up infinite possibilities.

Details	SSK-ST-8060-EX-D	SSK-ST-8060-IP-EX-D	SSK-ST-5530-EX-D	SSK-ST-5530-IP-EX-D	SSK-ST-5560-EX-D	SSK-ST-5560-IP-EX-D	SSK-ST-8060-WP	SSK-ST-8054-RGB-EX-D
Input Power	24W	24W	36W	36W	72W	72W	24W	
Size (Mtr)	5							
Input Voltage Range	DC 12V							
Colour Temperature	WW/CW	WW/CW	RGB	RGB	WW/CW/RGB	WW/CW/RGB	WW/CW	CW/WW/R/G/B/RGB
LEDs Per Meter	60	60	30	30	60	60	30	54
LED Type	3528	3528	5050	5050	5050	5050	3528	2835
Flux/Chip	7-8 lm	7-8 lm	16-16 lm	16-16 lm	18-20 lm	18-20 lm	16-18 lm	7-8 lm
Ingress Protection	IP20	IP65	IP20	IP65	IP20	IP65	IP67	IP20
Operating Temperature Range	-20°C to +60°C							
Power Adapter (Voltage)	12V							
Power Adapter (Current)	>2A	>2A	>3A	>3A	>5A/6A		PC-HV-01	>2A



Long life span
(Up to 50,000 hrs.)



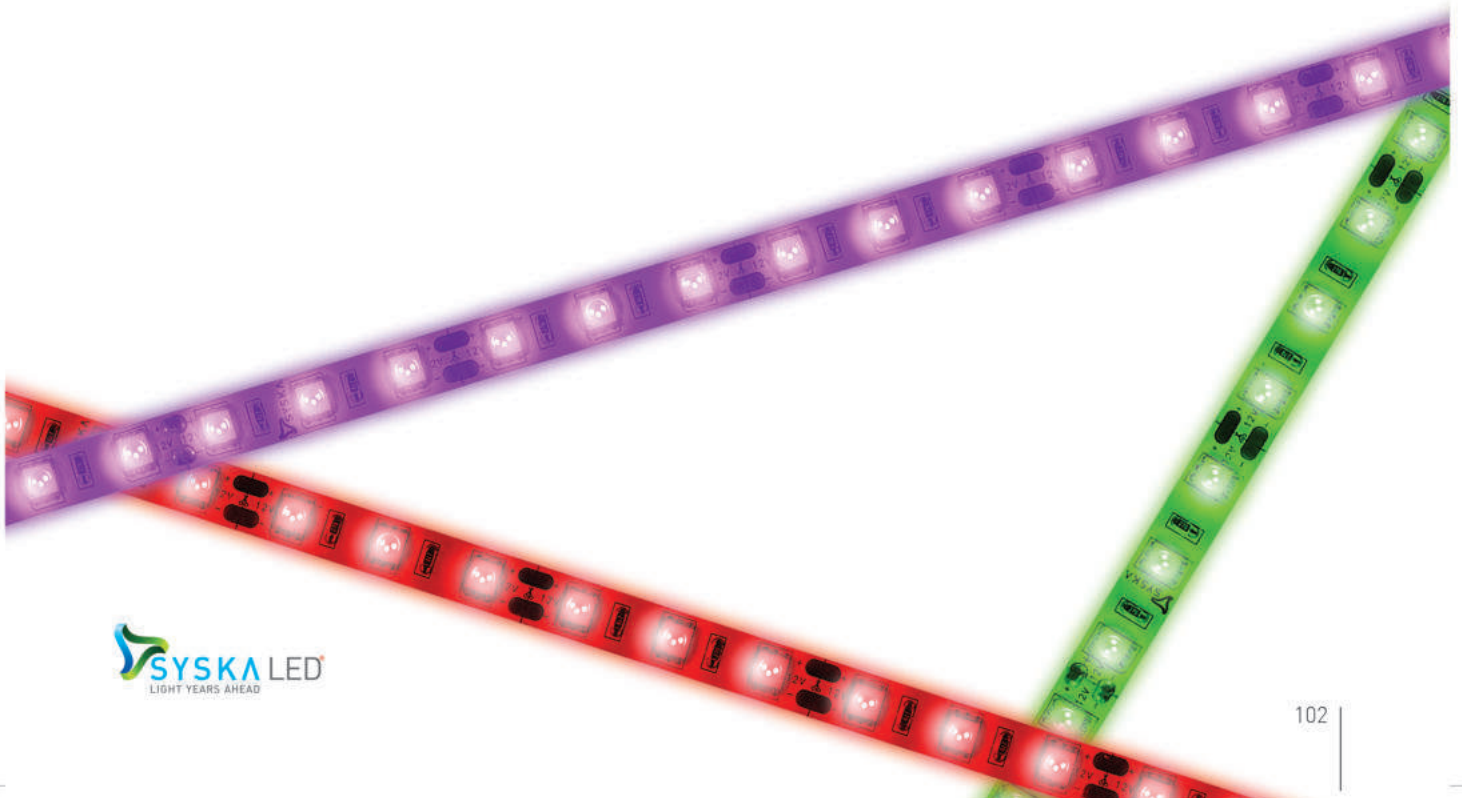
5 Mtr.



Eco-friendly



Energy saving



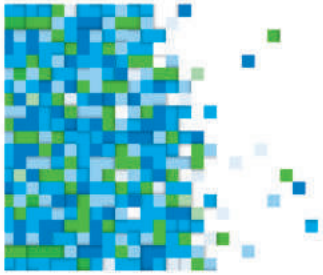


LED STEP LIGHTS

Watch your step with the Syska Step Lights that light up your stairways with focus light beams.







LED STEP LIGHT

Create an appealing ambience with optimised-quality lighting at every step in your home or office. The LED Step Lights light up your way in the dark, they contain no hazardous substances (no mercury, no lead) or UV and are extremely energy efficient.

Details	SSK-STP-0501
Input Power	5W
Size (mm)	83x83x47(H)
Cutout Size (mm)	65x65
Input Voltage Range	AC 90-300V, 50Hz
Colour Temperature	3000K-6500K
CRI	>80
Beam Angle	>60°
Lumens	250lm
Ingress Protection	IP65
Operating Temperature Range	-20°C to 60°C
Power Factor	>0.9
Housing	Pressure Die-Cast Aluminum



Lower power consumption and energy saving



Recess in wall



Moisture proof



Eco-friendly



Wide operating voltage



Indirect light



No UV radiation



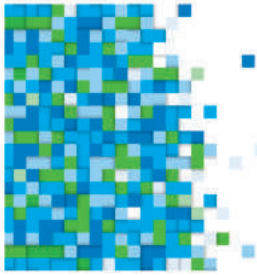
Step light



LED INDUSTRIAL BATTENS

Perfect for lighting up industry sheds, workshops and factories, SYSKA LED Industrial Battens are compact and robust. They light up a workplace for maximum visibility. They are durable and made to withstand weather conditions.





LED WEATHERPROOF BATTEN

The LED Weatherproof Batten is an anti-dust and waterproof light used for industrial application. Its linear diffuser creates a uniform pattern of light which illuminates the area evenly.

Details	SSK-WP-1018	SSK-WP-1036
Input Power	18W	36W
Input Voltage Range	AC 90-300V, 50/60Hz	
Size (mm)	650x110X85(H)	1260x110X85(H)
Colour Temperature	3000K-6500K	
CRI	>75	
Beam Angle	>120°	
Lumens	>1800lm	>3600lm
Ingress Protection	IP65	
Operating Temperature Range	-20°C to +60°C	
Power Factor	>0.9	
Housing	Thermo-plastic + Polycarbonate cover	



Eco-friendly



Wide operating voltage

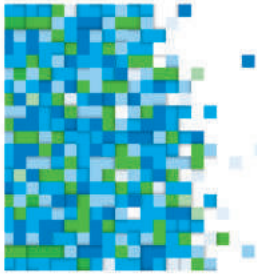


Moisture/
Weatherproof



Very low heating





LED WEATHERPROOF BATTEN

The Weatherproof Batten offers an anti-dust coating and is a waterproof LED light used for industrial application. With the help of its linear diffuser it creates a uniform pattern of light which illuminates the area evenly.

Details	SSK-WP-2020-20W	SSK-WP-2040-40W
Input Power	20W	40W
Input Voltage Range	AC 90-300V, 50Hz	
Size (mm)	630x63x60(H)	1250x63x60(H)
Colour Temperature	3000K-6500K	
CRI	>75	
Beam Angle	>150°	
Lumens	>1800lm	>3600lm
Ingress Protection	IP65	
Operating Temperature Range	-20°C to 55°C	
Power Factor	>0.9	
Housing	Thermoplastic	



Eco-friendly



Wide operating voltage



Sleek fixture



Moisture/
Weatherproof



Very low heating



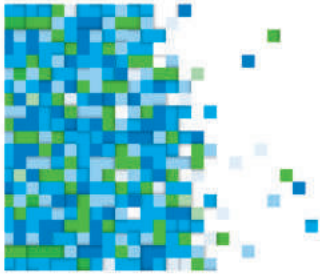


LED BULKHEAD

Lighting of an industrial shed or an outdoor surrounding space should never be compromised. Our Bulkhead lights emit maximum brightness for longer hours and are robust enough to withstand dust, water and damage.







LED BULKHEAD

The LED Bulkheads are used as wall lights and surface lights. They have high wattage, look elegant and are easy to maintain.

Details	SSK-BH-9W	SSK-BH-15W
Input Power	9W	15W
Size (mm)	230x100(H)	
Input Voltage Range	AC 90-300V, 50/60Hz	
Colour Temperature	3000K~6500K	
CRI	>75	
Beam Angle	>120°	
Lumens	>720lm	>1350lm
Ingress Protection	IP65	
Finish	Powder Coating	
Operating Temperature Range	-20°C to +60°C	
Power Factor	>0.9	
Housing	Die-cast Aluminum	
Diffuser	Milky glass diffuser	



Lower power consumption and energy saving



Eco-friendly



Wide operating voltage



No UV radiation

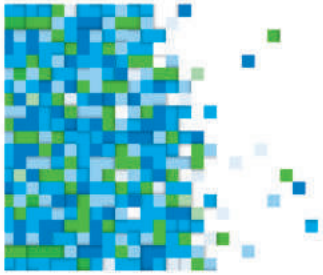


LED CANOPY LIGHTS

The canopy lights are ideal to light up areas that are frequented by pedestrians and vehicles. This includes areas like hotel lobbies, petrol stations etc. The lights have a compact design and come with low heating technology and emit a uniform pattern of light.







LED CANOPY LIGHTS

The Syska LED Canopy Lights are specifically designed to provide outdoor lighting for areas like petrol stations and industrial sheds etc. The illumination is achieved with high light flux and uniform pattern of lighting. They also offer protection from dust and rain.

Details	SSK-CP-60W-S	SSK-CP-90W-S	SSK-CP-120W-S	SSK-CP-150W-S
Input Power	60W	90W	120W	150W
Size (mm)	400x400x75(H)			
Cutout Size (mm)	362x362			
Input Voltage Range	AC 90-300V, 50Hz			
Colour Temperature	3000K-6500K			
CRI	>75			
Beam Angle	>120°			
Lumens	>6000lm	>9000lm	>12000lm	>15000lm
Ingress Protection	IP65			
Operating Temperature Range	-20°C to 60°C			
Power Factor	>0.9			
Mounting	Suspends, Surface, Recessed, Bracket mounting, Hook mounting, Bracket + hook, Grid with addition			
Housing	Pressure Die-Cast Aluminum/ Clear acrylic diffuser			



Wide operating voltage



No UV radiation



Moisture proof



Lower power consumption and energy saving



LED WELL GLASS

Well Glass lights emit optimum lumens and have a wide dispersion of light, which makes them a great lighting solution for industrial sheds or party lawns. They save up to 70% energy and are extremely environment-friendly.



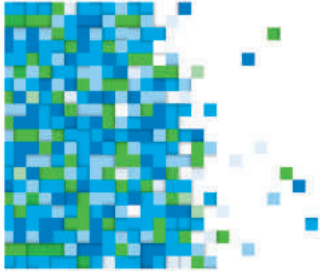




Frosted



Clear



LED WELL GLASS

The Well Glass LED Lights are used to light up manufacturing industries as they emit optimum lumens that spreads its light wide. They save up to 70% energy and are extremely environment-friendly.

Details	SSK-WG-N-25W	SSK-WG-N-36W	SSK-WG-N-45W	SSK-WG-N-60W	SSK-WG-N-80W
Input Power	25W	36W	45W	60W	80W
Input Voltage Range	AC 90-300V, 50Hz				
Size (mm)	Ø170x150(H)			Ø220x200(H)	
Colour Temperature	3000K-6500K				
CRI	>75				
Beam Angle	>120°				
Lumens	>2500lm	>3600lm	>4500lm	>6000lm	>8000lm
Ingress Protection	IP66				
Operating Temperature Range	-20°C to 60°C				
Power Factor	>0.9				
Diffuser Type	Clear/Frosted				
Housing	Pressure Die-Cast Aluminum with PC cover				
Mounting	Suspended/ Bracket mount/Hook				



Lower power consumption and energy saving



No UV radiation



Milk/Clear diffuser



Wide operating voltage



Eco-friendly



Moisture proof

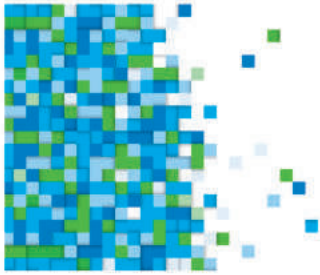


LED HIGH-BAY LIGHTS

Cover a large workspace easily with SYSKA LED High-Bay Lights. They are designed to illuminate large areas with their wide dispersion and do not affect the environment. They also help you save on power consumption.







LED HIGH-BAY

The Syska LED High-Bay Lights are perfect to light up warehouses and industrial sheds as they cover a wide area with their light dispersion, because working under inadequate lighting conditions can lead to inefficiency in work.

Details	SSK-HBG-80W	SSK-HBG-100W	SSK-HBG-120W	SSK-HBG-150W	SSK-HBG-200W	SSK-HBG-250W
Input Power	80W	100W	120W	150W	200W	250W
Size (mm)	ø360x330(H)	ø360x330(H)	ø360x340(H)	ø500x385(H)	ø500x385(H)	ø500x415(H)
Input Voltage Range	AC 90-300V, 50/60Hz					
Colour Temperature	3000K-6500K					
CRI	>80					
Beam Angle	>120°					
Lumens	>9600lm	>12000lm	>14400lm	>18000lm	>24000lm	>30000lm
Ingress Protection	IP65					
Operating Temperature Range	-20°C to +60°C					
Housing	Extruded Aluminum + Sheet Aluminum Reflector					
Power Factor	>0.95					



Lower power consumption and energy saving



Replacement for high voltage CFL & HD lamps



Wide operating voltage



Eco-friendly



No UV radiation

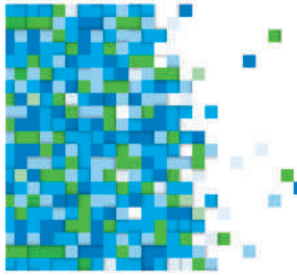


Moisture proof



Reflector type model





LED UFO HIGH-BAY

These High Bay LED Lights are elegant and compact, shaped like a UFO they have a wide dispersion of light. They have a modern design and consume less power to offer higher illumination.

Details	SSK-UFO-100W	SSK-UFO-150W	SSK-UFO-200W	SSK-UFO-240W
Input Power	100W	150W	200W	240W
Size (mm)	Ø276x182(H)	Ø315x202(H)	Ø345x215(H)	Ø345x215(H)
Input Voltage Range	AC 90-300V, 50Hz			
Colour Temperature	3000K-6500K			
CRI	>75			
Beam Angle	60°/90°/120°			
Lumens	>15000lm	>22500lm	>30000lm	>36000lm
Ingress Protection	IP66			
Operating Temperature Range	-20°C to 50°C			
Power Factor	>0.95			
Housing	Pressure Die-Cast Aluminum / Bracket Mount / Pendant Mount			
Mounting	Suspended with S-hook			
Lens	PMMA Spiral Lens			



Lower power consumption and energy saving



150 lm/w lumens



Moisture proof



No UV radiation



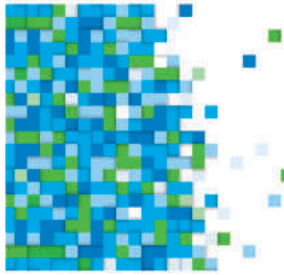
Eco-friendly



Wide operating voltage







LED UFO-E HIGH-BAY

Save on cost incurred due to heavy electricity bills by replacing regular lights with these circular saucer shaped High Bay LED Lights, in your factories and warehouses. They have a slim design and the optical PMMA lens provides a uniform light distribution.

Details	SSK-UFO-E-80W	SSK-UFO-E-100W	SSK-UFO-E-120W	SSK-UFO-E-150W	SSK-UFO-E-200W	SSK-UFO-E-240W
Input Power	80W	100W	120W	150W	200W	240W
Size (mm)	Ø262x124(H)	Ø262x124(H)	Ø262x124(H)	Ø262x124(H)	Ø262x124	Ø262x124(H)
Input Voltage Range	AC 90-300V, 50Hz					
Colour Temperature	3000K-6500K					
CRI	>75					
Beam Angle	60°/90°/120°					
Lumens	>96000lm	>12000lm	>14400lm	>18000lm	>24000lm	>28800lm
Ingress Protection	IP65					
Operating Temperature Range	-20°C to 50°C					
Power Factor	>0.95					
Housing	Pressure Die-cast Aluminum					
Mounting	Suspended with hook / Bracket / Pendant					
Lens	Individual PMMA lens (Pad)					



Lower power consumption and energy saving



No UV radiation



120 lm/w lumens



Wide operating voltage



Moisture proof



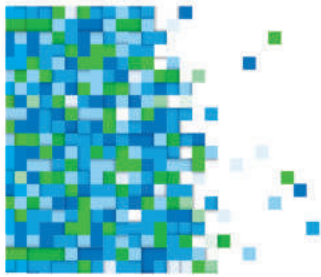
Light weight high bay



LED FLOOD LIGHTS

For areas where you need a large amount of light, SYSKA LED Beam/Flood Lights get the job done and at a much lesser cost. Choose from a wide range of specially designed LED Flood Lights whether it be a sports event or a wedding.





LED FLOOD LIGHT

When it comes to lighting up a football field or an outdoor wedding reception, these flood lights provide optimum lighting. They do not heat up faster like traditional flood lights and consume less power and therefore last long.

Details	SSK-BLS-N-10W	SSK-BLS-N-20W	SSK-BLS-N-30W	SSK-BLS-N-40W	SSK-BLS-N-60W	SSK-BLS-N-90W	SSK-BLS-N-120W	SSK-BLS-N-150W	SSK-BLS-N-200W	SSK-BLS-N-250W	SSK-BLS-N-300W	SSK-BLS-N-350W	SSK-BLS-N-400W	SSK-BLS-N-500W
Lens Type Model						SSK-BLS-N-90W (L)	SSK-BLS-N-120W (L)	SSK-BLS-N-150W (L)	SSK-BLS-N-200W (L)	SSK-BLS-N-250W (L)	SSK-BLS-N-300W (L)	SSK-BLS-N-350W (L)	SSK-BLS-N-400W (L)	SSK-BLS-N-500W (L)
Input Power	10W	20W	30W	40W	60W	90W	120W	150W	200W	250W	300W	350W	400W	500W
Size (mm)	115x85x70(H)	180x140x95(H)	225x185x100(H)	225x185x100(H)	285x230x140(H)	372x277x170(H)	372x277x170(H)	425x325x150(H)	555x325x180(H)	670x325x220(H)	670x325x220(H)	800x325x220(H)	800x325x220(H)	970x325x220(H)
Input Voltage Range	AC 90-300V, 50Hz													
Colour Temperature	3000K-6500K													
CRI	>75													
Beam Angle	>120°													
Lumens	>1000 lm	>2000 lm	>3000 lm	>4000 lm	>6000 lm	>9000 lm	>12000 lm	>15000 lm	>20000 lm	>25000 lm	>30000 lm	>35000 lm	>40000 lm	>50000 lm
Ingress Protection	IP66													
Operating Temperature Range	-20°C to 50°C													
Power Factor	>0.9													
Housing	Pressure Die-Cast Aluminum with Toughened Glass Cover & PMMA lens													



Lower power consumption and energy saving



No UV radiation



Moisture proof

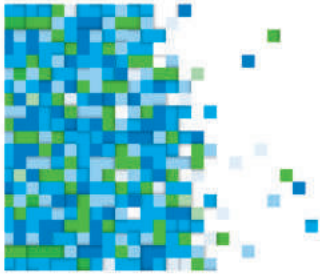


Wide operating voltage



Eco-friendly





LED FLOOD LIGHT

Light up the outdoors of your home with these powerful Syska LED Flood Lights. The lights have a wide beam and consume less energy.

Details	SSK- BLE- 10W	SSK- BLE- 20W	SSK- BLE- 30W	SSK- BLE- 40W	SSK- BLE- 60W	SSK- BLE- 70W	SSK- BLE- 90W	SSK- BLE- 120W	SSK- BLE- 150W	SSK- BLE- 200W	SSK- BLE- 250W	SSK- BLE- 300W	SSK- BLE- 350W	SSK- BLE- 400W
Input Power	10W	20W	30W	40W	60W	70W	90W	120W	150W	200W	250W	300W	350W	400W
Size (mm)	130x 55x 125(H)	190x 60x 185(H)	190x 60x 185(H)	226x 222x 53(H)	282x 271x 66(H)	304x 284x 74(H)	304x 284x 74(H)	304x 284x 74(H)	367x 337x 85(H)	367x 337x 85(H)	430x 400x 78.2(H)	430x 400x 78.2(H)	430x 400x 78.2(H)	433x 375x 110(H)
Input Voltage Range	AC 90-300V, 50Hz													
Colour Temperature	3000K-6500K													
CRI	>75													
Beam Angle	>120°													
Lumens	>1000 lm	>2000 lm	>3000 lm	>4000 lm	>6000 lm	>7000 lm	>9000 lm	>12000 lm	>15000 lm	>20000 lm	>25000 lm	>30000 lm	>35000 lm	>40000 lm
Ingress Protection	IP65													
Operating Temperature Range	-20°C to 60°C													
Power Factor	>0.95													
Housing	Pressure Die-Cast Aluminum with Toughened Glass Cover													



Lower power consumption and energy saving



No UV radiation



Moisture proof



Wide operating voltage

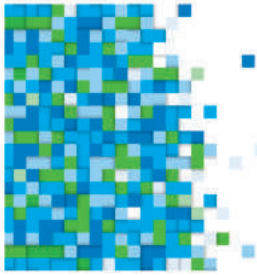


Eco-friendly



Sleek design





LED FLOOD LIGHT (MAXGLOW)

Light up the outdoors of your home with these powerful Syska LED Flood Lights. The lights have a wide beam and consume less energy.

Details	SSK-BLE-MG-50W	SSK-BLE-MG-100W
Input Power	50W	100W
Size (mm)	226x222x53(H)	282x271x66(H)
Input Voltage Range	AC 90-300V, 50Hz	
Colour Temperature	3000K-6500K	
CRI	>75	
Beam Angle	>120°	
Lumens	>5000lm	>10000lm
Ingress Protection	IP65	
Operating Temperature Range	-20°C to 60°C	
Power Factor	>0.95	
Housing	Pressure Die-Cast Aluminum with Toughened Glass Cover	



Lower power consumption and energy saving



No UV radiation



Moisture proof



Wide operating voltage

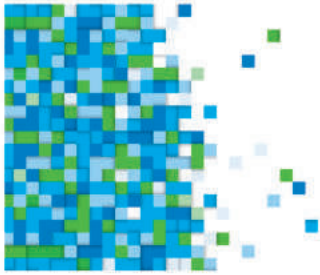


Eco-friendly



Sleek design





LED FLOOD LIGHT

When it comes to general lighting, area lighting, sports lighting or a wedding, these flood lights provide optimum brightness. The efficient Thermal Management Technology keeps these lights at a suitable temperate to offer a longer life.

Details	SSK-BLS-CF-40W	SSK-BLS-CF-60W	SSK-BLS-CF-90W	SSK-BLS-CF-120W
Input Power	40W	60W	90W	120W
Size (mm)	230x190x130(H)		290x240x145(H)	
Input Voltage Range	AC 90-300V, 50Hz			
Colour Temperature	3000K-6500K			
CRI	>80			
Beam Angle	>120°			
Lumens	>4000lm	>6000lm	>9000lm	>12000lm
Ingress Protection	IP65			
Operating Temperature Range	-10°C to 50°C			
Power Factor	>0.9			
Housing	Pressure Die-Cast Aluminum with Toughened Glass Cover			



Lower power consumption and energy saving



No UV radiation



Moisture proof

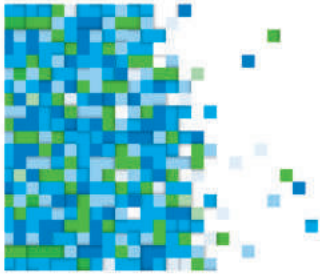


Wide operating voltage



Eco-friendly





LED FLOOD LIGHT (COB)

These flood lights have a concentrated light source (COB) that helps to project light on a specific object, avoiding wastage of illumination.

Details	SSK-BLS-10W-COB	SSK-BLS-30W-COB	SSK-BLS-50W-COB	SSK-BLS-70W-COB	SSK-BLS-100W-COB
Input Power	10W	30W	50W	70W	100W
Size (mm)	109x160x50(H)	187x250x73(H)	237x317x94(H)	260x385x113(H)	260x385x113(H)
Input Voltage Range	AC 90-300V, 50/60Hz				
Colour Temperature	3000K-6500K				
CRI	>75				
Beam Angle	>120°				
Lumens	>800lm	>2400lm	>4000lm	>5600lm	>8000lm
Ingress Protection	IP65				
Operating Temperature Range	-20°C to +60°C				
Housing	Pressure Die-cast Aluminum				
Power Factor	>0.9				



Lower power consumption and energy saving



Wide operating voltage

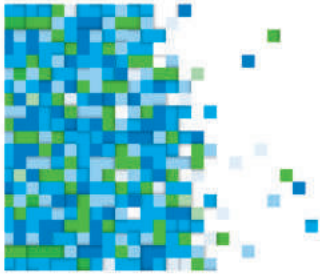


Eco-friendly



No UV radiation





LED FLOOD LIGHT

Elegant and sturdy design offers highest thermal stability. These lights offer better illumination as they exude a wide beam of light and consume less energy.

Details	SSK-FLN-10W	SSK-FLN-20W	SSK-FLN-30W	SSK-FLN-50W	SSK-FLN-70W	SSK-FLN-100W	SSK-FLN-120W	SSK-FLN-150W	SSK-FLN-200W
Input Power	10W	20W	30W	50W	70W	100W	120W	150W	200W
Size (mm)	125x115x35(H)	150x140x40(H)	180x170x40(H)	240x230x50(H)	240x230x52.5(H)	280x270x54.5(H)		310x300x72(H)	345x335x84(H)
Input Voltage Range	AC 90-300V, 50Hz								
Colour Temperature	3000K~6500K								
CRI	>75								
Beam Angle	>120°								
Lumens	>1000lm	>2000lm	>3000lm	>5000lm	>7000lm	>10000lm	>12000lm	>15000lm	>20000lm
Ingress Protection	IP66								
Operating Temperature Range	-10°C to 50°C								
Power Factor	>0.9								
Housing	Pressure Die-Cast Aluminum with Toughened Glass Cover								



Lower power consumption and energy saving



Wide operating voltage



Eco-friendly



No UV radiation

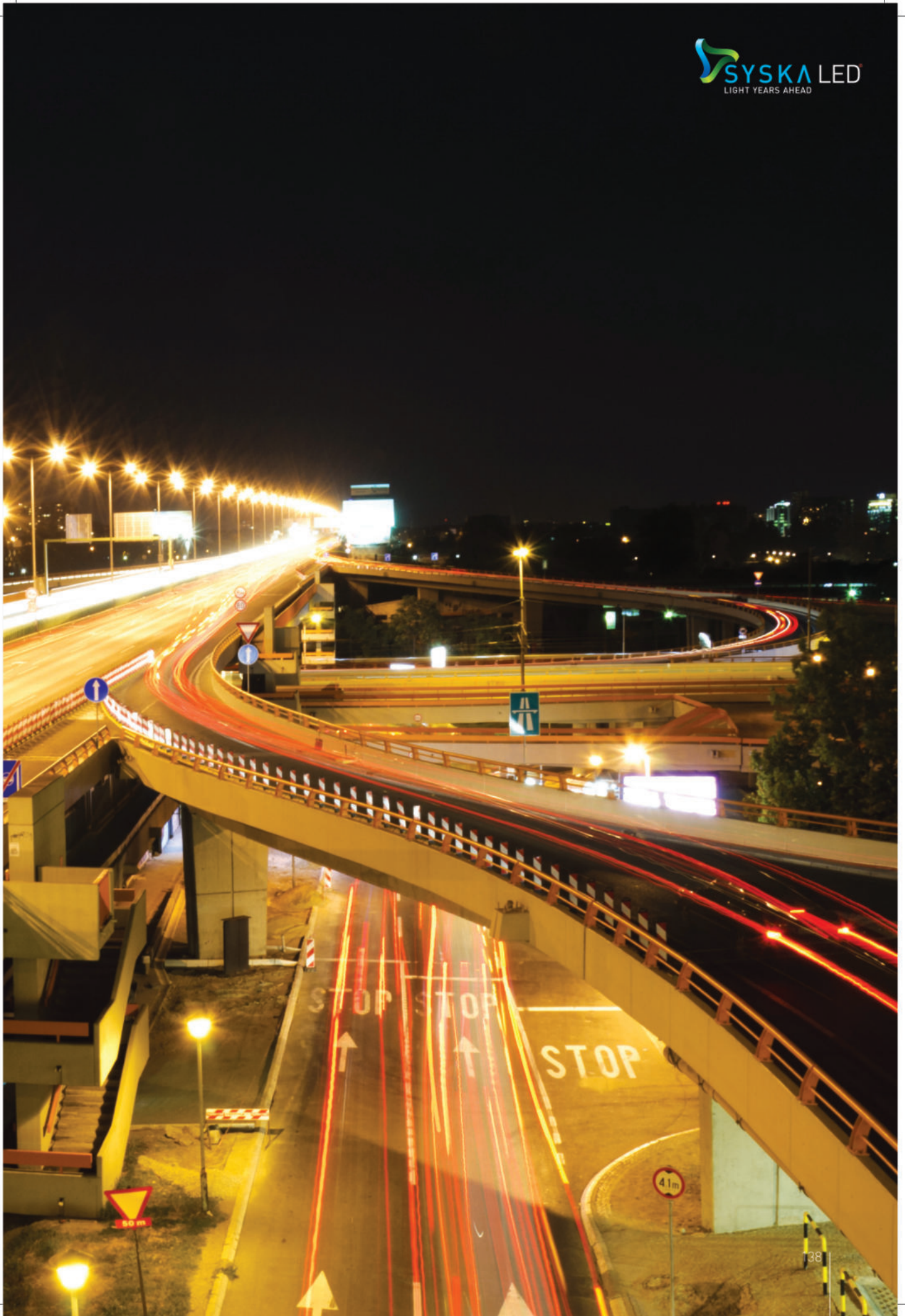


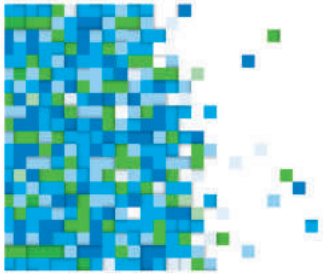


LED STREET LIGHTS

Have no fear when walking in the night under SYSKA LED Street Lights which light up the streets and help you see better. They can also be used for lighting up campuses or gardens and are much more efficient than traditional lighting solutions. Their optic lenses allow them to light up larger areas so you do not have to spend on setting up more lights for the streets.







LED STREET LIGHT (COB)

These LED Street Lights are specifically designed to spread light efficiently and cover maximum area. They disperse heat in order to stay cool and last longer.

Details	SSK-SLR-30W	SSK-SLR-50W	SSK-SLR-70W	SSK-SLR-100W	SSK-SLR-150W	SSK-SLR-200W
Input Power	30W	50W	70W	100W	150W	200W
Input Voltage Range	AC 90-300V, 50/60Hz					
Number of Lens	1	1	2	2	3	4
Size (mm)	500x220x85(H)	585x225x95(H)	680x225x80(H)	685x235x95(H)	815x265x95(H)	985x300x100(H)
Colour Temperature	3000K~6500K					
CRI	>75					
Power Factor	>0.90					
Beam Angle	>120°					
Lumens	>3000lm	>5000lm	>7000lm	>10000lm	>15000lm	>20000lm
Ingress Protection	IP65					
Finish	Powder Coated					
Operating Temperature Range	-20°C to +60°C					
Housing	Pressure Die-cast Aluminum					



Lower power consumption and energy saving



Elliptical lens gives wide spread of light to cover maximum area



Long life span (Up to 50,000 hrs)



No UV radiation

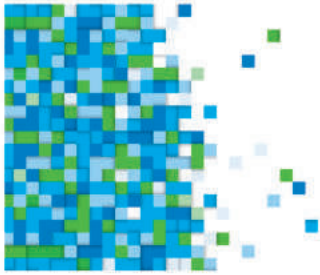


Eco-friendly



Good colour rendering





LED STREET LIGHT

This strong, sturdy, thermally efficient street light is ready to operate in any environment condition. Their optic lenses light up a larger area, which decreases the expenditure and hassles of setting up more lights.

Details	SSK-SLF-CF-12W	SSK-SLF-CF-18W	SSK-SLF-CF-25W	SSK-SLF-CF-36W	SSK-SLF-CF-40W	SSK-SLF-CF-45W	SSK-SLF-CF-60W	SSK-SLF-CF-72W	SSK-SLF-CF-90W	SSK-SLF-CF-120W	SSK-SLF-CF-150W
	SSK-SLF-CF-12W (L)	SSK-SLF-CF-18W (L)	SSK-SLF-CF-25W (L)	SSK-SLF-CF-36W (L)	SSK-SLF-CF-40W (L)	SSK-SLF-CF-45W (L)	SSK-SLF-CF-60W (L)	SSK-SLF-CF-72W (L)	SSK-SLF-CF-90W (L)	SSK-SLF-CF-120W (L)	SSK-SLF-CF-150W (L)
Input Power	12W	18W	25W	36W	40W	45W	60W	72W	90W	120W	150W
Size (mm)	330x115x75(H)			395x190x85(H)				465x230x85(H)			
Input Voltage Range	AC 90-300V, 50Hz										
Colour Temperature	3000K-6500K										
CRI	>80										
Beam Angle	>120°										
Lumens	>1200lm	>1800lm	>2500lm	>3600lm	>4000lm	>4500lm	>6000lm	>7200lm	>9000lm	>12000lm	>15000lm
Ingress Protection	IP65										
Operating Temperature Range	-10°C to 50°C										
Power Factor	>0.9										
Housing	Pressure Die-Cast Aluminum with Toughened Glass Cover & PMMA lens (Optional)										



Lower power consumption and energy saving



No UV radiation



Moisture proof



Street light



Wide operating voltage

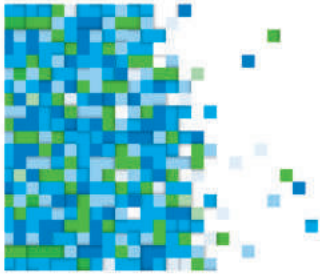


Eco-friendly



Pole mounted





LED STREET LIGHT

These street lights light up every corner of the street and make the pedestrians feel safe. There is increased spacing by wide beam angle achieved with the help of an optic lens.

Details	SSK-SLG-CF-30W	SSK-SLG-CF-40W	SSK-SLG-CF-45W	SSK-SLG-CF-50W
	SSK-SLG-CF-30W (L)	SSK-SLG-CF-40W (L)	SSK-SLG-CF-45W (L)	SSK-SLG-CF-50W (L)
Input Power	30W	40W	45W	50W
Size (mm)	352x127x70(H)		380x150x70(H)	
Input Voltage Range	AC 90-300V, 50Hz			
Colour Temperature	3000K-6500K			
CRI	>75			
Beam Angle	>120°			
Lumens	>3000lm	>4000lm	>4500lm	>5000lm
Ingress Protection	IP65			
Operating Temperature Range	-10°C to 50°C			
Power Factor	>0.9			
Housing	Pressure Die-cast Aluminum with Toughened Glass Cover & PMMA lens (Optional)			



Lower power consumption and energy saving



No UV radiation



Street light



Moisture proof



Wide operating voltage

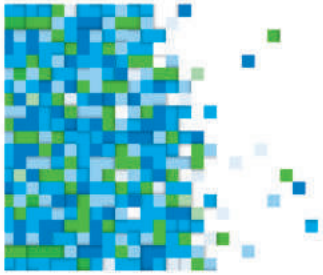


Eco-friendly



Pole mounted





LED STREET LIGHT

The street at night stays bright when it is lit by these LED Street Lights. Their optic lenses light up a larger area, which decreases the expenditure and hassles of setting up more lights. The back cover opening offers easy serviceability of the light.

Details	SSK-SLF-BO-40W	SSK-SLF-BO-45W	SSK-SLF-BO-60W	SSK-SLF-BO-70W	SSK-SLF-BO-90W	SSK-SLF-BO-100W	SSK-SLF-BO-120W	SSK-SLF-BO-150W	SSK-SLF-BO-200W	SSK-SLF-BO-210W	SSK-SLF-BO-250W	SSK-SLF-BO-300W
Input Power	40W	45W	60W	70W	90W	100W	120W	150W	200W	210W	250W	300W
Size (mm)	425x180x80(H)				485x210x105(H)				645x295x120(H)			
Input Voltage Range	AC 90-300V, 50Hz											
Colour Temperature	3000K~6500K											
CRI	>75											
Beam Angle	>120°											
Lumens	>4400 lm	>4950 lm	>6600 lm	>7700 lm	>9900 lm	>11000 lm	>13200 lm	>16500 lm	>22000 lm	>25200 lm	>27500 lm	>33000 lm
Ingress Protection	IP66											
Operating Temperature Range	-10°C to 50°C											
Power Factor	>0.9											
Housing	Pressure Die-Cast Aluminum with Toughened Glass Cover & along with PMMA lens											



Lower power consumption and energy saving



No UV radiation



Moisture proof



Street light



Wide operating voltage

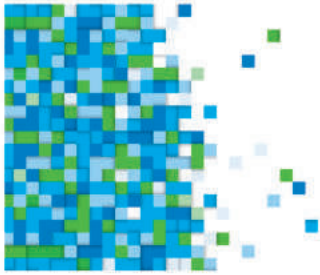


Eco-friendly



Pole mounted





LED STREET LIGHT

The Syska Street Lights are here to light up your way and make you feel safe while walking on the streets at night. The optic lenses light up a larger area, which helps you see better.

Details	SSK-SLF-F-40W	SSK-SLF-F-45W	SSK-SLF-F-60W	SSK-SLF-F-70W	SSK-SLF-F-90W	SSK-SLF-F-120W	SSK-SLF-F-150W
	SSK-SLF-F-40W (Lens)	SSK-SLF-F-45W (Lens)	SSK-SLF-F-60W (Lens)	SSK-SLF-F-70W (Lens)	SSK-SLF-F-90W (Lens)	SSK-SLF-F-120W (Lens)	SSK-SLF-F-150W (Lens)
Input Power	40W	45W	60W	70W	90W	120W	150W
Size (mm)	330x175x55(H)			390x225x55(H)	465x265x55(H)		
Input Voltage Range	AC 90-300V, 50Hz						
Colour Temperature	3000K-6500K						
CRI	>80						
Beam Angle	>120°						
Lumens	>4000lm	>4500lm	>6000lm	>9000lm	>9000lm	>12000lm	>15000lm
Ingress Protection	IP65						
Operating Temperature Range	-10°C to 50°C						
Power Factor	>0.9						
Housing	Pressure Die-cast Aluminum with Toughened Glass Cover & PMMA Modular Lens (Optional)						



Lower power consumption and energy saving



No UV radiation



Moisture proof



Street light



Wide operating voltage

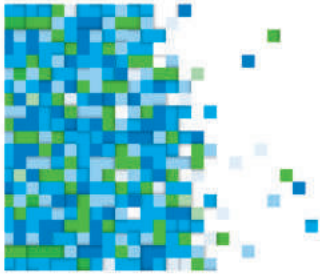


Eco-friendly



Pole mounted





LED STREET LIGHT

Do not be afraid to roam the streets at night with these LED Street Lights above you. Their optic lenses light up a larger area, which decreases the expenditure and hassles of setting up more lights.

Details	SSK-ST-25W-MG	SSK-ST-30W-MG	SSK-ST-40W-MG
Input Power	25W	30W	40W
Size (mm)	320x75x60(H)		
Input Voltage Range	AC 90-300V, 50Hz		
Colour Temperature	3000K~6500K		
CRI	>75		
Beam Angle	>120°		
Lumens	>2500lm	>3000lm	>4000lm
Ingress Protection	IP65		
Operating Temperature Range	-20°C to 50°C		
Power Factor	>0.9		
Housing	Pressure Die-cast Aluminum with PC Cover		



Street light



Wide operating voltage



Moisture proof



No UV radiation



Eco-friendly



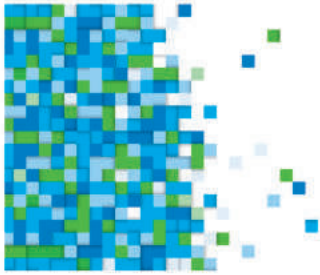
Lower power consumption and energy saving



Pole mounted







LED STREET LIGHT

Enjoy a beautiful drive on those well-lit roads with these Syska LED Street Lights. They have a sleek design, optic lenses and an opening at the back for serviceability.

Details	SSK-NST-20W	SSK-NST-30W	SSK-NST-40W	SSK-NST-50W	SSK-NST-100W
Input Power	20W	30W	40W	50W	100W
Size (mm)	283x113x43(H)	308x128x53(H)	325x128x53(H)	400x140x48(H)	525x182x56(H)
Input Voltage Range	AC 90-300V, 50Hz				
Colour Temperature	3000K-6500K				
CRI	>75				
Beam Angle	>120°				
Lumens	>2000lm	>3000lm	>4000lm	>5000lm	>10000lm
Ingress Protection	IP65				
Operating Temperature Range	-20°C to 50°C				
Power Factor	>0.9				
Housing	Pressure Die-cast Aluminum with PC Cover & PMMA lens				



Lower power consumption and energy saving



No UV radiation



Street light



Moisture proof



Wide operating voltage



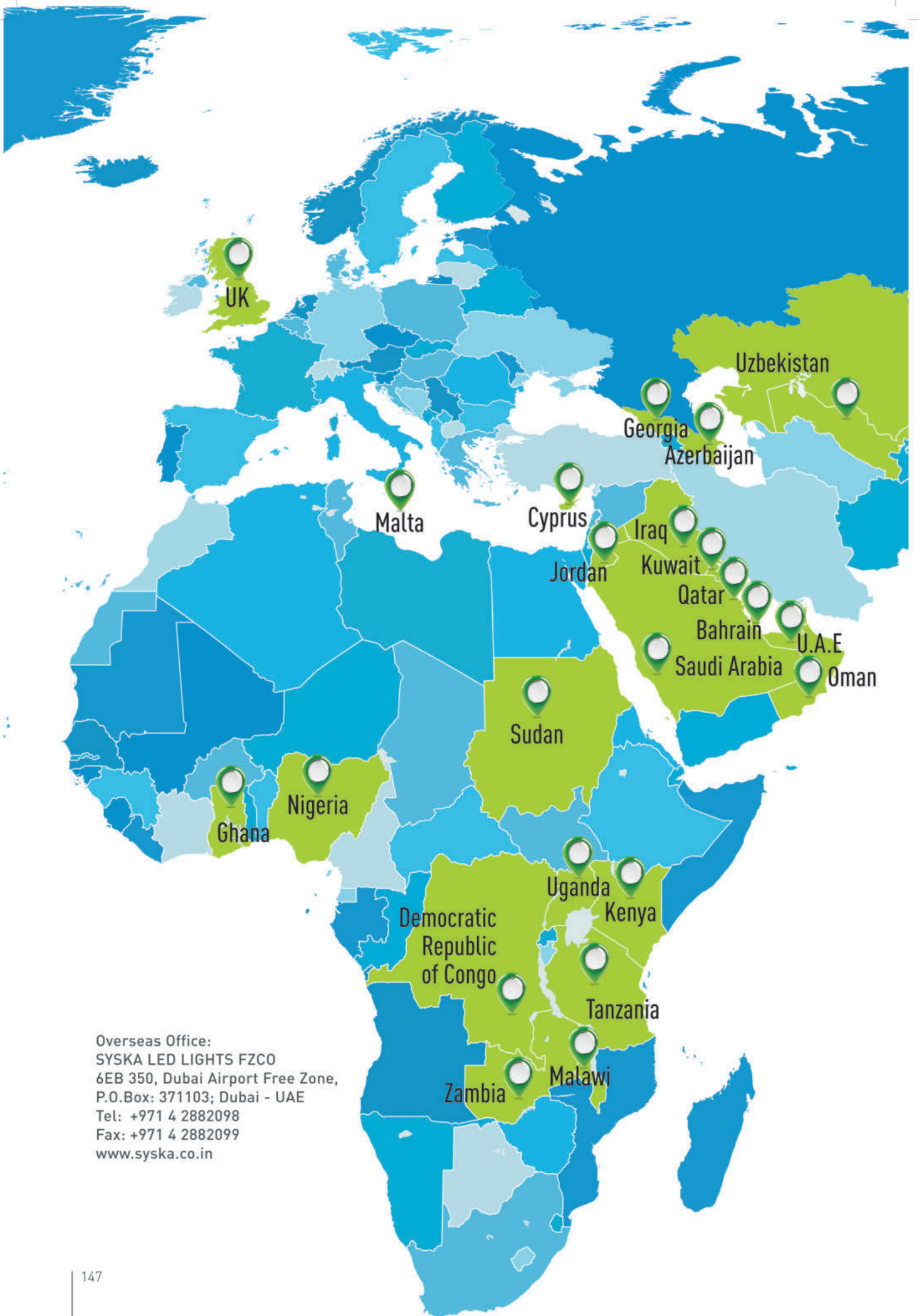
Eco-friendly



Pole mounted



Sleek design



Overseas Office:
SYSKA LED LIGHTS FZCO
6EB 350, Dubai Airport Free Zone,
P.O.Box: 371103; Dubai - UAE
Tel: +971 4 2882098
Fax: +971 4 2882099
www.syska.co.in



*This map is a graphical representation designed for general reference purposes only.

NORTH

Delhi: 609-610, 6th Floor, DLF Tower, Moti Nagar Industrial Area, New Delhi - 110015. Tel.: 011-49442901, 49423296.

Ghaziabad: A-44, Ground Floor, Pacific Business Park, Site-4, Sahibabad, Ghaziabad - 201010. Tel.: 0120-4227371/70.

Lucknow: 401-C, 3rd Floor, Govinda Apartment, 1A Shahnajaf Road, Lucknow - 226001, Tel.: 0522-4024789.

Mohali: SCO No: 14, 1st Floor, Near Bestech Square Mall, Sector 66A, Industrial Area, Phase - 9 Mohali, Punjab - 160062.

Ludhiana: 4th Floor, SCO- 122, Near Hotel 'A', Feroze Gandhi Market, Ludhiana - 141001. Tel.: 0161-5079788.

Jammu: CB-13, Gupta Towers, 3rd Floor, Rail Head Complex, Bahu Plaza, Gandhi Nagar, Above HDFC Bank, Jammu - 180004. Tel.: 2477574.

EAST

Kolkata: Arcadia Central -1st Floor, Room no.-1A, 31, Dr. Ambedkar Sarani Road, Kolkata - 700046. Tel.: 033-40632387.

Patna: 3rd Floor, Bindeshwari Plaza, Near Income Tax Golambar, Kidwaipuri, Patna - 800001.

Ranchi: 403, 4th Floor, Satya Ganga Arcade, Lalji Hirji Road, Ranchi, Jharkhand - 834001. Tel.: 0651-2214044.

Bhubaneswar: C/o Ananta Niwas, Plot No. 362/3855, 1st Floor, In front of BMC Main Gate, Gautam Nagar, Kalpana Square, Bhubaneswar - 751014.

Guwahati: Basanta Enclave, 4th Floor, Opp. Royal Arcade, B Baruah Road, Ulubari, Guwahati - 781007, Assam. Tel.: 0361-2460018.

WEST

Mumbai: 601, 6th Floor, Centre Point, Andheri Kurla Road, Opp. JB Chakala Metro Station, Andheri East, Mumbai - 400059. Tel.: 022-40150819.

Ahmedabad: 601-602, 6th Floor, Aarya Epoch, Opp. Passport Sewa Kendra - 2, Next to Tata Motors, Above Brand Factory, Vijay cross road, Navrangpura, Ahmedabad - 380009, Tel.: 079-40308054.

Jaipur: 410, 4th floor, ARG Corporate Park, Gopal Bari, Ajmer Road, Opp. Mission Compound, Jaipur - 302006. Tel.: 0141-2369909.

Bhopal: A-2, 5th Floor, Platinum Plaza, Near Mata Mandir, T.T. Nagar, Bhopal, MP - 462003, Tel.: 0755-4295695.

Indore: 411, PU4, Satguru Parinay Apts, 4th Floor, A.B. Road, Opp. C21 Mall, Indore - 452010. Tel.: 0731-2558262, 4096912.

Raipur: HP Plaza, Shop no. - 2-3, Beside Chawla Petrol Pump, In front of Kachehri Chowk, Raipur - 492001, Tel.: - 0771-4070771.

Nagpur: Plot No. 116, Ghare Marg, Behind Dinanth School, Dhantoli, Nagpur - 440012.

Nashik: Office no. - 11-A, Business Bay, 2nd Floor, Shrihari Kute Marg, Near Hotel Sandip, Mumbai Naka, Nashik - 422002. Tel.: 0253-2450800.

Jalgaon: A-101, Major Corner, Near Vodafone Gallery, Ganesh Colony Road, Jalgaon - 425001.

SOUTH

Bengaluru: Enzyme Tech Park, 2nd Floor, No. 4, Kempegowda Service Road, 1st Stage, Domlur, Near Post Office, Old Airport Road, Bengaluru - 560071. Tel.: 080-41694599.

Secunderabad: H.No.8-2-248/1/7/56, 2nd Floor, Lakshmi Raju Building, Nagarjuna Hills, Panjagutta, Hyderabad - 500082. Tel.: 040-66666711.

Chennai: No. 151, Gee Gee Emerald, 5th Floor, Nungambakkam, Chennai - 600034. Tel.: 044-42175355.

Kochi: 48/425-P, C/o Cheryl Enterprises, Elamakkara, P.O., Kochi, Kerala - 682026. Tel.: 0484-2536062, 2536063.



SYSKA LED Lights Pvt. Ltd.

Corp. Office: Syska House, Plot No. - 89/90/91, Survey No. - 232/1/2, Off VIP Airport Road,
Lane No. - 4, Sakore Nagar, Lohegaon, Pune - 411014 | Toll Free: 1800 102 8787

Email: customer-care.led@sskgroup.in | www.syska.co.in

Disclaimer: • Specifications mentioned are based on test reports at the time of preparation of this catalogue. • Technical products are under continuous upgradation & specifications may vary 5-10% depending on testing standards/instruments. • Value parameters are approximate. • Images are for reference purpose, drawn from photographs & rendering. Actual products may vary in appearance. • Product applications are mentioned specifically for indoor/outdoor use. • Lumens mentioned are for higher CCT (6500K/5000K), for lower CCT (4000K/3000K), lumens reduce at 10-15%. • In case, IP rating is not specified, it should be considered as IP20.